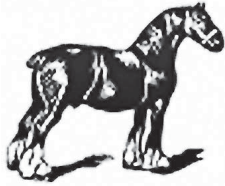


# Light Horse Schedule



## Ashbourne Show

Qualifiers for Horse of the Year Show - Ridden Hunters,  
Riding Horses, Show Cobs, Hacks, Private Driving and Horse  
Working Hunters.

WH Classes, RoR Amateur Ridden Tattersalls, BDS Driving,  
BSPS, NPS M & M & Silver Medal & Unaffiliated Classes.

**The Polo Ground,  
Osmaston, Nr Ashbourne  
Saturday 17<sup>th</sup> August 2024**

**Light Horse Entries Secretary - Cheryl Scott  
Tel: 07966 625994**

**Website: [www.ashbourneshow.co.uk](http://www.ashbourneshow.co.uk)**

Livestock schedules available on the website

Organised by Ashbourne Shire Horse Society

CELEBRATING



**HORSE OF THE  
YEAR SHOW**

**SAVE THE DATE**  
9<sup>TH</sup> - 13<sup>TH</sup> OCTOBER 2024

[HOYS.CO.UK](http://HOYS.CO.UK)



**TIMETABLE (these are Not Before times)**

**Main Ring 1**

8.15 a.m.	Classes 501 - 503	Horse of the Year Show Ridden Hunters & Championship
11 a.m.	Classes 504 - 506	Horse of the Year & BDS Driving Classes

**Shaws Equestrian Ring 2**

8.15 a.m.	Class 507-511	BSPS Summer Worker Stakes
11.a.m	Class 512	Unaffiliated Working Hunter Horses
12 p.m.	Classes 513	Horse of the Year Show Working Hunter Horses
Lunch Break		
2.30pm	Class 514 - 515	BSPS Cradle & Nursery Stakes

**Thorswood Equine Transport Ring 3**

8.15 a.m.	Classes 516 - 517	Horse of the Year Show Hacks & Championship
10.30 a.m.	Classes 518 – 519	RoR Ridden & Open In hand
11.30 a.m.	Class 520 – 521	Horse of the Year Riding Horses & Championship
2pm	Classes 522 – 526	Horse of the Year Show Cobs & Championship, Novice & Amateur Cobs

**Little Rocks Equine Ring 4**

9.00 a.m.	Classes 527 – 530	NPS In hand M & M
12 p.m.	Classes 531 – 534	NPS Ridden M&M & Silver Medal
1.30 p.m.	Classes 535 – 536	Novice Ridden Hunter & Riding Club Show Horse (Unaffiliated)
To Follow	Classes 537 - 543	Local Rider Classes and Championship

All the above times are approximate times only.  
Classes **will not** start before the times shown.

**Course builder: Mr D Norlander**

## **MEMBERSHIP OF THE ASHBOURNE SHIRE HORSE SOCIETY**

The Ashbourne Shire Horse Society would be pleased to welcome new members to the Society upon payment of the annual subscription. Membership entitles you to entrance for 1 member, 1 guest and two children under the age of 15, entry to the members' enclosure, restaurant, bar and grandstand.

### **ENTRY RULES**

#### **ONLINE ENTRIES – [www.ashbourneshow.co.uk](http://www.ashbourneshow.co.uk)**

**Hoys - On-line Entries close 29th July 2024**

**Other classes – On-line 5<sup>th</sup> August 2024**

**Paper Entries close 21<sup>st</sup> July 2024**

There is a £2 admin charge on postal entries, cheques will not be accepted, Bank transfers only.

Entries **received** by this date will be charged at the published rate

Late Entries **received** between 30<sup>th</sup> July to 5<sup>th</sup> August 2024 will be charged at **double** the entry rate.

**Our Entry fees INCLUDE first aid.**

### **HOYS**

**Class entry fees for Hoys qualifying classes include HOYS contribution.**

**NO ENTRIES WILL BE ACCEPTED AFTER 5<sup>TH</sup> AUGUST 2024**

PLEASE NOTE: IF ENTERING HORSE OF THE YEAR SHOW QUALIFYING CLASSES YOU **MUST** BE REGISTERED ONLINE VIA [WWW.GRANDSTANDENTRIES.COM](http://WWW.GRANDSTANDENTRIES.COM) BEFORE ENTERING ASHBOURNE SHOW

Entries for the following classes can also be taken on the day from any competitor **already** entered in other classes. Any such entries will be charged at double the standard entry rate: - unaffiliated working hunter, local riders, M&M and veterans. Entries on the day for the training stakes will be charged at £22/£28 per entry

### **WRISTBAND AND VEHICLE PASS ALLOCATION**

Exhibitors' entrance wristbands and vehicle passes will be sent out prior to the show and are allocated as follows:

1	Animal	2 Wristbands	1 Vehicle Pass
2 - 3	Animals	3 Wristbands	1 Vehicle Pass
4 - 5	Animals	4 Wristbands	2 Vehicle Passes

**Please note that no admittance will be granted to the showground if you are not wearing the supplied wristband. In case of an emergency only exhibitors wearing light horse wrist bands will be given access to the lorry park.**

Additional admission wristbands for friends and supporters can be purchased at a reduced rate **ONLY** if purchased at the time of entry.

**Headgear: A correctly secured skull cap/riding hat, of a current safety standard, must be worn by all persons when mounted, anywhere on the Showground. All skull caps/riding hats should have a three-point harness, and this must be correctly fastened at all times. In the ring, all skull caps must be worn with a plain dark coloured peaked cover.**

**All exhibitors are reminded that they compete at their own risk and they should have public liability insurance.**

### **Equine Flu & Tetanus Vaccinations**

Equine Influenza and Tetanus vaccinations are a compulsory requirement for all horses attending the Ashbourne Show.

The requirement for the first 3 vaccinations is as follows:

The first 2 vaccinations 21 – 92 days apart,

a third booster between 150-215 days,

and an annual booster vaccination within 6 months of the show.

No horse should enter competitions within 7 days of an EI vaccination.

Foals should commence vaccinations at 6 months old.

This rule may be subject to change from guidance from the FEI/BEF and any changes will be notified via the Showing Council and ASAO websites.

**The official photographer for Ashbourne Show is Amy Griffiths Photography, the images will be available to purchase on the day as well as online at [www.amygriffithsphotography.co.uk](http://www.amygriffithsphotography.co.uk)**

**There will be an onsite Farrier available on the day from 7.30am til 2pm  
Chris Hole - 07976 485409**

**This show is a qualifier for the N.C.P.A. Pony of the Year Show in September 2024. First and second prize winners in appropriate classes will qualify.  
The highest placed junior in the ridden M & M classes will qualify for the Topline Junior Final.**

## **HORSE OF THE YEAR SHOW CATPLANT GROUP OF COMPANIES LTD SHOW HUNTER**

**To be judged in the Main Ring 1 at 8.15 am**

**Judges: Miss V Smith (Lancs) (ride)  
Mrs L Penrose (conformation)**

Entry Fees: £60 (including Hoys Contribution)

Prizes: 1<sup>st</sup> £40, 2<sup>nd</sup> £35, 3<sup>rd</sup> £30, 4<sup>th</sup> £25

These classes are held under the rules of The British Show Horse Association (see regulation 20), however the general rules as set out in the Horse of the Year Show rulebooks take precedence, a copy of which can be downloaded from [www.hoys.co.uk](http://www.hoys.co.uk). All Riders, Owners and Producers must be Members of the British Show Horse Association, The Showing Register or Sport Horse Breeding GB. Horses must be registered with the British Show Horse Association, The Showing Register or Sport Horse Breeding GB.

Exhibitors are required by DEFRA to carry with them Official Identity Documents for all horses/ponies when competing or travelling. Competitors are reminded that it is a DEFRA requirement that the Official Identity Documents must be in the name of the legal owner within 30 days of ownership. This must be registered with the breed society, relevant studbook or ID issuing agency, dependant on breed/type of animal. Spot checks may be carried out at qualifying shows and by breed societies.

Competitors must enter their horses in the appropriate sections, but class 501 and class 502 will be judged first and the judges shall have the power to transfer exhibits to class 503 and class 504 if they deem it necessary.

### **CLASS 501 - Horse of the Year Show Qualifier 2024 – Catplant Group of Companies Ltd. Lightweight Show Hunter**

Mare or gelding 4 yrs old & over, exceeding 158cms, capable of carrying up to 12 stone 7lbs (79.5 kgs). Entries in this class may not compete in the Small Show Hunter of the Year, and vice versa.

### **CLASS 502 - Horse of the Year Show Qualifier 2024 - Catplant Group of Companies Ltd. Middleweight Show Hunter**

Mare or gelding 4 yrs old & over, exceeding 158cms, capable of carrying up to 12 stone 7lbs (79.5 kgs) and not exceeding 14 stone (89kgs). Entries in this Class may not compete in the Small Show Hunter of the Year, and vice versa.

### **CLASS 503 - Horse of the Year Show Qualifier 2024 - Catplant Group of Companies Ltd. Heavyweight Show Hunter**

Mare or gelding 4 yrs old & over, exceeding 158cms, capable of carrying over 14 stone (89kgs). Entries in this Class may not compete in the Small Show Hunter of the Year, and vice versa.

Classes 501-503 are qualifiers for the Horse of the Year Show, NEC, Birmingham, 9<sup>th</sup> – 13<sup>th</sup> October 2024. Qualification will not pass below fifth place. Qualification will be verified by the Horse of the Year Show office.

This is a Horse of the Year Show qualifier, all data given upon entry of this class is provided to Grandstand Media Limited and stored on the Grandstand Entries System. For full policy details please visit [www.grandstandentries.com](http://www.grandstandentries.com).

This class entitles eligible amateur combinations to earn points for the Premier Amateur League, with the opportunity of gaining a wild card place at HOYS 2024. This is open to current TSR members or those that have signed up to the Premier Amateur League 2024, for more information see [www.theshowingregister.co.uk](http://www.theshowingregister.co.uk).

The highest placed unqualified exhibit, registered with BSHA, in each Open Affiliated class will qualify to compete in the BSHA Supreme of Season Final. The Finals will be held at the BSHA Hunter & National Championship Shows in September 2024.

**RIDDEN HUNTER CHAMPIONSHIP** 1<sup>st</sup> & 2<sup>nd</sup> prize-winners from the ridden hunter classes 501 – 503 to compete for **The Cottage Garden Cosmetics Perpetual Challenge Trophy**

**The Champion & Reserve will receive prizes & vouchers kindly sponsored by Shaws Equestrian**

**The Ronnie Marmont Stanning Trophy** - To be judged in the Main Ring and will be awarded to the exhibit which presents the most pleasing image of horse and rider, combining distinguished and elegant appearance, suitability and fitness of purpose with stylish performance. Two exhibits from each of the ridden hunter classes will be selected during the judging of their classes to compete for this Championship. A prize of £10 will be awarded to the highest placed entry in the ridden hunter classes, owned & ridden by an exhibitor residing within a radius of 25 miles of the show ground. All eligible entries must wear a white armband.

## **DRIVING CLASSES**

**To be judged in the Main Ring not before 11.00 am**

**Judge: Mrs H Noad**

Entry Fees: £28

Prizes: 1<sup>st</sup> £20, 2<sup>nd</sup> £15, 3<sup>rd</sup> £10

**CLASS 504 – Exercise Vehicles** – Open to horses and ponies, 4 years old and over. A single, pair or tandem driven to a carriage of non-traditional type design and includes those with pneumatic tyres specifically designed for carriages (i.e. Not car tyres). Judging will include general cleanliness, correct fitting of harness and vehicle suitability. Young Drivers, the driver must be aged 8 years or over on the first day of the show at which they are to compete. A driver under the age of 18 must be accompanied in the vehicle by a competent and responsible person aged 18 years or over, a “responsible adult”. Proof of age will be required if necessary. It is the responsibility of the owner/driver (if over 18) or (if the owner/driver is under 18) the responsible adult to ensure that his/her groom/s is/are competent for the purpose of attending to the turnout and aged 8 or over on the day of the show. Drivers, grooms and passengers who are under the age of 14 years must wear a hard hat which fits correctly.

## **HORSE OF THE YEAR SHOW PRIVATE DRIVING CLASSES**

**To be judged in the Main Ring 1 to follow exercise vehicle class**

**Judge: Mrs H Noad**

Entry Fees: £60 (including Hoys Contribution)

Prizes: 1<sup>st</sup> £40, 2<sup>nd</sup> £35, 3<sup>rd</sup> £30, 4<sup>th</sup> £25

### **CLASS 505 – Private Driving 13.2hh & under**

Ponies 13.2hh & under, 4 years and over. Open to a single, pair or tandem. Driven to a traditional type vehicle, traditional profile and identifiable type to resemble the design of a carriage built prior to the First World War. The vehicle may be made from modern materials but must have traditional style springing and carriage lamps. Pneumatic tyre vehicles, trade turnouts and show wagons are not eligible.

### **CLASS 506 – Private Driving over 13.2hh**

Horses & ponies over 13.2hh, 4 years and over. Open to a single, pair or tandem. Driven to a traditional type vehicle, traditional profile and identifiable type to resemble the design of a carriage built prior to the First World War. The vehicle may be made from modern materials but must have traditional style springing and carriage lamps. Pneumatic tyre vehicles, trade turnouts and show wagons are not eligible.

### **Horse of the Year Private Driving Championship**

1<sup>st</sup>, 2<sup>nd</sup> & 3<sup>rd</sup> Prize winners from classes 505 & 506

British Driving Society also offer a Champion, Reserve & Best Young Driver Rosettes

**The Wallmyers Sue Williams Trophy** will be awarded to the champion

Qualification for the Harness Horse & Pony of the Year Championship at The Horse of the Year Show, 9<sup>th</sup> – 13<sup>th</sup> October 2024, National Exhibition Centre, Birmingham, will be awarded to the highest placed turnout in the Private Driving Championship down to 6<sup>th</sup> place, disregarding those already qualified. The qualifying turnout must be owned and driven by a member of the British Driving Society.

## **BSPS SUMMER WORKER STAKES**

**To be judged in Ring 2 at 8.15am**

**Judges: Mrs J Fitchett & Mr K Baskeyfield**

Entry Fees: £28

Prizes: 1<sup>st</sup> £20 2<sup>nd</sup> £15, 3<sup>rd</sup> £10

### **CLASS 507 - 60 cm SUMMER WORKER STAKES**

Plaited or Heritage Mountain and Moorland ponies, 4 years old and over not exceeding 158cms. Riders any age but must be suitably mounted for the pony/horse they ride.

**An award card for the highest placed child under 12 years of age on 1<sup>st</sup> January in the current year.**

**The Speedway Cup** will be awarded to the winner of the championship.

### **CLASS 508 - 70 cm SUMMER WORKER STAKES**

Plaited or Heritage Mountain and Moorland ponies, 4 years old and over not exceeding 158cms. Riders any age but must be suitably mounted for the pony/horse they ride.

**An award card for the highest placed child under 14 years of age on 1<sup>st</sup> January in the current year.**

### **CLASS 509- 80 cm SUMMER WORKER STAKES**

Plaited or Heritage Mountain and Moorland ponies, 4 years old and over not exceeding 158cms. Riders any age but must be suitably mounted for the pony/horse they ride.

**An award card for the highest placed child under 18 years of age on 1<sup>st</sup> January in the current year.**

### **CLASS 510 - 90 cm SUMMER WORKER STAKES**

Plaited or Heritage Mountain and Moorland ponies, 4 years old and over not exceeding 158cms. Riders any age but must be suitably mounted for the pony/horse they ride.

**An award card for the highest placed child under 18 years of age on 1<sup>st</sup> January in the current year.**

### **CLASS 511 - 100 cm SUMMER WORKER STAKES**

Plaited or Heritage Mountain and Moorland ponies, 4 years old and over not exceeding 158cms. Riders any age but must be suitably mounted for the pony/horse they ride.

**An award card for the highest placed child under 25 years of age on 1<sup>st</sup> January in the current year.**

The highest placed 3 ponies will qualify for the BSPS Summer Championships together with the highest placed junior rider.

Ponies may compete in more than one height section.

### **FENCES**

There must be a minimum of 8 fences up to a maximum of 12 fences.

Marks will be awarded: -

Jumping 70 marks

Style whilst jumping 30 marks

Conformation and way of going 20 marks

**Total 120 marks**

Summer Worker Stakes Championship. Open to ponies placed first and second from classes 507 to 511.



## **UNAFFILIATED WORKING HUNTER HORSES**

**To be judged in Shaws Equestrian Ring 2 at 11 a.m**

**Judge: Mrs J Griffin**

Entry Fees: £22

Prizes: 1<sup>st</sup> £15, 2<sup>nd</sup> £10, 3<sup>rd</sup> £5.

### **CLASS 512 – Unaffiliated Working Hunter Horse**

Mare, gelding or stallion (competing stallions must have a red, white and blue ribbon displayed in their tail) 4 yrs old & over exceeding 148cms (14.2hh). Competitors in this class do not need to be registered with any society. Open to riders aged 16 or over. Fence height will be a maximum 2'9".

**The Eques-Train Silver Bowl** will be given to the winner of this class.

## **HORSE OF THE YEAR SHOW WORKING HUNTER CLASSES**

**To be judged in Shaws Equestrian Ring 2 at 12pm**

**Judge: Mr D Ingle**

***Kindly sponsored by Sophie Knight, Equine Dentist***

Entry Fees: £60 (including Hoys Contribution)

Prizes: 1st £40, 2nd £35, 3rd £30, 4th £25

This competition is for Working Hunters, any weight, mares, geldings or stallion (competing stallions must have a red, white and blue ribbon displayed in their tail) four years old or over, exceeding 148cm, to be ridden. Any horse which has qualified as a Grade A Show Jumper or Advanced Event Horse as at 1st January in the current year is not eligible to compete in Working Hunter classes. All Riders, Owners and Producers must be Members of the British Show Horse Association, The Showing Register or Sport Horse Breeding GB. Horses must be registered with the British Show Horse Association, The Showing Register or Sport Horse Breeding GB.

Exhibitors are required by DEFRA to carry with them Official Identity Documents for all horses/ponies when competing or travelling. Competitors are reminded that it is a DEFRA requirement that the Official Identity Documents must be in the name of the legal owner within 30 days of ownership. This must be registered with the breed society, relevant studbook or ID issuing agency, dependant on breed/type of animal. Spot checks may be carried out at qualifying shows and by breed societies.

### **CLASS 513 - Horse of the Year Show Qualifier 2024 – Sport Horse Breeding of Great Britain Working Hunter**

Fences will not exceed 1.14m (3ft 9ins) in height, there should be a minimum of 8 fences and a maximum of 12 fences. The course must contain a combination and should contain a water tray. This class will be judged in two parts. Part One (Jumping) will be judged first, without a jump-off. All clear rounds and any other horses the judges may require will go forward to the next part. A rider can ride up to two horses in the jumping phase but then must select only one horse to take forward into the ride and conformation section if so required (no change of rider is allowed).

This class will be run in accordance with the general rules as set out in the Horse of the Year Show rulebook, a copy of which can be downloaded from [www.hoys.co.uk](http://www.hoys.co.uk).

This is a Horse of the Year Show Qualifier, all data given upon entry of this class is provided to Grandstand Media Limited and stored on the Grandstand Entries System. For full policy details please visit [www.grandstandentries.com](http://www.grandstandentries.com).

Marks must be awarded in the following way:

PHASE I

(60 MARKS)

A: JUMPING POINTS 40 MARKS

B: STYLE WHILE JUMPING 20 MARKS

PHASE II

(40 MARKS)

C: CONFORMATION 20 MARKS

D: RIDE 20 MARKS

In the event of equality, the CONFORMATION MARK from Phase II will take precedence, followed by the RIDE MARK, and then the STYLE MARK.

This class is a qualifying class for Horse of the Year Show, NEC, Birmingham, 9<sup>th</sup> – 13<sup>th</sup> October 2024. Qualification will not pass below 3rd place, with the exception of the BSHA National Championship show. Qualification will be verified by the Horse of the Year Show office.

**The Nimrod Trophy** will be presented in this class.

## **THE BSPS WORKING HUNTER PONY CLASSES**

**To be judged in Shaws Equestrian Ring 2 not before 2.30pm**

**Judges: Mr K Baskeyfield & Mrs J Fitchitt**

Entry Fees: £28

Prizes: 1<sup>st</sup> £20 2<sup>nd</sup> £15, 3<sup>rd</sup> £10

**CLASS 514 THE B.S.P.S. Cradle Stakes.** Mare or gelding, 4 years old and over, not exceeding 122cms. Suitable to be ridden by a rider not to have attained their 11th birthday before 1st January in the current year. 1<sup>st</sup> prize winner qualifies for BSPS The White Company Champion of Champions

**The Young Ideas Trophy** will be awarded to the winner of the class

**CLASS 515 THE B.S.P.S. Nursery Stakes.** Mare or gelding, 4 years old and over, not exceeding 133cms. Suitable to be ridden by a rider not to have attained their 12th birthday before 1st January in the current year. 1<sup>st</sup> prize winner qualifies for BSPS Binks Family Champion of Champions

**The David Bowman Leatherland Cup** will be presented in this class.

**Open Mini WHP Championship. Open to ponies that have been placed first and second in the Nursery Stakes and Cradle Stakes classes only.**

## **HORSE OF THE YEAR SHOW HACK CLASSES**

**To be judged in Thorswood Equine Transport Ring 3 at 8.15am**

**Judges: Ms M Underwood (Ride)  
Mr T Chalmers (conformation)**

Entry Fees: £60 (including Hoys Contribution)

Prizes: 1st £40, 2nd £35, 3rd £30, 4th £25

This competition is open to mares and geldings, four years old or over, that must be registered with the British Show Horse Association. All Riders, Owners and Producers must be Members of the British Show Horse Association.

Exhibitors are required by DEFRA to carry with them Official Identity Documents for all horses/ponies when competing or travelling. Competitors are reminded that it is a DEFRA requirement that the Official Identity Documents must be in the name of the legal owner within 30 days of ownership. This must be registered with the breed society, relevant studbook or ID issuing agency, dependant on breed/type of animal. Spot checks may be carried out at qualifying shows and by breed societies.

Horses competing at the Horse of the Year Show and qualifying shows in The Hunter sections of The Sport Horse Breeding of Great Britain classes at their Affiliated Shows cannot compete in Hack, Cobs and Riding Horse classes at the same show, on the same day and vice versa. This does not apply to SHB (GB Ridden Sport Horse classes).

The BSHA offer a Novice, Young Rider and Amateur rosette in each Open class and a Champion rosette for each section (with the exception of Open Working Show Horse, Ladies Show Horse & HOYS Hunter classes).

Recipients of the Young Rider rosette will qualify for the BSHA Young Rider of the Year at the National Championship Show in September 2024.

These classes will be run in accordance with the general rules as set out in the Horse of the Year Show rulebook, a copy of which can be downloaded from [www.hoys.co.uk](http://www.hoys.co.uk).

**Kindly Sponsored by Su Beardmore & Steph Litherland, Rosettes & Sashes to the top 10, plus Champion & Reserve**

### **CLASS 516 – Horse of the Year Show Qualifier 2024 – The Andrews Family Small Hack**

Mare or gelding, 4yrs old and over. Must exceed 148cm but not exceed 154cm

### **CLASS 517 – Horse of the Year Show Qualifier 2024 – Culford Lodge Commodities Large Hack**

Mare or gelding, 4yrs old and over. Must exceed 154cm but not exceed 160cm.

This is a Horse of the Year Show Qualifier, all data given upon entry of this class is provided to Grandstand Media Limited and stored on the Grandstand Entries System. For full policy details please visit [www.grandstandentries.com](http://www.grandstandentries.com).

This class is a qualifying class for Horse of the Year Show, NEC, Birmingham, 9<sup>th</sup> – 13<sup>th</sup> October 2024. Qualification will not pass below 5th place, with the exception of the BSHA National Championship Show. Qualification will be verified by the Horse of the Year Show office.

The highest placed unqualified exhibit in the top 5 in each Open Affiliated class will qualify to compete in the BSHA Supreme of the Year Finals. The Finals will be held at the BSHA National Championship Shows in September 2024.

**THE HACK CHAMPIONSHIP** - 1<sup>st</sup> & 2<sup>nd</sup> prize winners from classes 516 & 517 to compete for **The Dave Bowman Leatherland Cup**

## RoR SHOWING SERIES CLASSES

To be judged in Thorswood Equine Transport Ring 3 at 10.30am

**Judge: Mr D Ingle**

Entry Fees: £28

Prizes: 1<sup>st</sup> £20, 2<sup>nd</sup> £15, 3<sup>rd</sup> £10

### Class 518 Tattersalls RoR AMATEUR Ridden Show Series Qualifier 2025

Open to all RoR and NR competition registered horses, 4yrs and over, mares and geldings, owned, produced and ridden by an Amateur. Riders must be 15 years or over on the 1<sup>st</sup> January of the calendar year holding the classes. Horses should be ridden in a snaffle, Pelham or simple double bridle with a plain cavasson noseband. Horses should be plaited.

The Series is open to AMATEURS only – those employed in racing will be allowed to compete. Class will be judged under 'riding horse' format without 'type' being taken into consideration.

Racing injuries and blemishes ARE IGNORED in this series

The Judge will not ride at the qualifiers but will ride in the final.

Competitors/handlers/grooms must wear a safety/kite mark hard hat with a chinstrap.

**The first three go forward to the final at the Hickstead Derby Meeting June 2025**

RoR rosettes 1<sup>st</sup> – 4<sup>th</sup> and a branded prize to the winner to be redeemed from the RoR Office

There is also a prize for the highest placed veteran horse (aged 15 yrs or over) and qualification for the RoR Ridden Veteran Final at the RoR National Championships 2025. Prize to be redeemed from the RoR Office.

Amateur definition:

The rules are as in the rulebook with the following addition that an amateur may not show a horse owned or sponsored by a company or commercial firm. In addition, a person classed as amateur must not be supported by a company in any way or act as brand ambassador whether financially or in-kind. An amateur is a person who for the purpose of RoR classes does not/has not during the current season or previous season:

Engage (d) in breeding, livery, buying or selling, dealing or hiring horses in a commercial capacity.

Horses must not have been stabled at or reside in a Professional Producer's/Trainer's yard from January 1st 2023

Riders must not have ridden any animals produced by a Professional/Trainer in the current or previous season.

Horses and riders must not receive any help from a Professional Producer/Trainer at a SHOW in the current season.

A rider who has ridden for a Professional/Producer Trainer in the current or previous season must not have ridden horses at a show.

Any breaches of this ruling will be taken seriously and will result in disqualification from future classes.

### Class 519 Tattersalls RoR OPEN In Hand Show Series Qualifier 2025

Open to all RoR and NR **competition registered** horses, 3yrs and over, fillies, mares and geldings.

Blemishes caused through racing will be ignored. Horses do not need to be shod to compete in the RoR Open In-Hand class.

Horses can be shown in a Bitless/In Hand Bridle.

All those entering horses and/or participating in the show agree to be bound by the Retraining of Racehorses Rules and Regulations from time to time in force.

This class is a qualifier for the RoR OPEN In Hand Showing Series FINAL

**The first three go forward to the final at The RoR National Championships at Aintree in August 2025.**

RoR rosettes 1<sup>st</sup> - 4<sup>th</sup> and a branded prize to the winner to be redeemed from the RoR Office.

**The Red Penny Trophy** will be awarded to the winner of class 519

## **HORSE OF THE YEAR RIDING HORSE CLASSES**

**To be judged in Thorswood Equine Transport Ring 3 at 11.30am**

**Judges: Ms M Underwood (ride)  
Mr T Chalmers (conformation)**

Entry Fees: £60 (including Hoys Contribution)

Prizes: 1st £40, 2nd £35, 3rd £30, 4th £25

This competition is open to mares and geldings, four years old or over, that must be registered with the British Show Horse Association. All Riders, Owners and Producers must be Members of the British Show Horse Association.

Exhibitors are required by DEFRA to carry with them Official Identity Documents for all horses/ponies when competing or travelling. Competitors are reminded that it is a DEFRA requirement that the Official Identity Documents must be in the name of the legal owner within 30 days of ownership. This must be registered with the breed society, relevant studbook or ID issuing agency, dependant on breed/type of animal. Spot checks may be carried out at qualifying shows and by breed societies.

Horses competing at the Horse of the Year Show and qualifying shows in The Hunter sections of The Sport Horse Breeding of Great Britain classes at their Affiliated Shows cannot compete in Hack, Cobs and Riding Horse classes at the same show, on the same day and vice versa. This does not apply to SHB (GB Ridden Sport Horse classes).

The BSHA offer a Novice, Young Rider and Amateur rosette in each Open class and a Champion rosette for each section (with the exception of Open Working Show Horse, Ladies Show Horse & HOYS Hunter classes). Recipients of the Young Rider rosette will qualify for the BSHA Young Rider of the Year at the National Championship Show in September 2024.

These classes will be run in accordance with the general rules as set out in the Horse of the Year Show rulebook, a copy of which can be downloaded from [www.hoys.co.uk](http://www.hoys.co.uk).

### **CLASS 520 – Horse of the Year Show Qualifier 2024 – Vale Farms Yorkshire Ltd Small Riding Horse**

Mare or gelding, 4yrs old and over, Must exceed 148cm but not exceed 158cm.

### **CLASS 521 -Horse of the Year Show Qualifier 2024 – Epiony Large Riding Horse**

Mare or gelding, 4 years old and over, must exceed 158cms

These classes will be run in accordance with the general rules as set out in the Horse of the Year Show rulebook, a copy of which can be downloaded from [www.hoys.co.uk](http://www.hoys.co.uk).

This is a Horse of the Year Show Qualifier, all data given upon entry of this class is provided to Grandstand Media Limited and stored on the Grandstand Entries System. For full policy details please visit [www.grandstandentries.com](http://www.grandstandentries.com).

This class is a qualifying class for Horse of the Year Show, NEC, Birmingham, 9<sup>th</sup> – 13<sup>th</sup> October 2023. Qualification will not pass below 5<sup>th</sup> place, with the exception of the BSHA National Championship Show. Qualification will be verified by the Horse of the Year Show office.

The highest placed unqualified exhibit in the top 5 in each Open Affiliated class will qualify to compete in the BSHA Supreme of the Year Finals. The Finals will be held at the BSHA National Championship Shows in September 2024.

Kindly sponsored by **Black Country Saddlery**, both class winners to receive a rug.

**THE Riding Horse CHAMPIONSHIP** - 1<sup>st</sup> & 2<sup>nd</sup> prize winners from classes 520 & 521 to compete for **The Royal Bank of Scotland Salver** will be awarded to the Champion.

## **HORSE OF THE YEAR SHOW RIDDEN COB CLASSES**

To be judged in Thorswood Equine Transport Ring 3 at 2pm

**Judges: Miss V Smith (Lancs) (ride)  
Mrs L Penrose (conformation)**

Entry Fees: £60 (including Hoys Contribution)

Prizes: 1<sup>st</sup> £40, 2<sup>nd</sup> £35, 3<sup>rd</sup> £30, 4<sup>th</sup> £25

This competition is open to mares and geldings, four years old or over, that must be registered with the British Show Horse Association. All Riders, Owners and Producers must be Members of the British Show Horse Association.

Exhibitors are required by DEFRA to carry with them Official Identity Documents for all horses/ponies when competing or travelling. Competitors are reminded that it is a DEFRA requirement that the Official Identity Documents must be in the name of the legal owner within 30 days of ownership. This must be registered with the breed society, relevant studbook or ID issuing agency, dependant on breed/type of animal. Spot checks may be carried out at qualifying shows and by breed societies.

Horses competing at the Horse of the Year Show and qualifying shows in The Hunter sections of The Sport Horse Breeding of Great Britain classes at their Affiliated Shows cannot compete in Hack, Cobs and Riding Horse classes at the same show, on the same day and vice versa. This does not apply to SHB (GB Ridden Sport Horse classes).

The BSHA offer a Novice, Young Rider and Amateur rosette in each Open class and a Champion rosette for each section (with the exception of Open Working Show Horse, Ladies Show Horse & HOYS Hunter classes). Recipients of the Young Rider rosette will qualify for the BSHA Young Rider of the Year at the National Championship Show in September 2024.

This class is divided into three sections as follows:

**CLASS 522 – Horse of the Year Show Qualifier 2024 - The Harrod & Coles Family Lightweight Cob of the Year** – Horses must exceed 148cm but not exceed 155cm. To be capable of carrying up to 14 stone.

**CLASS 523 – Horse of the Year Show Qualifier 2024 - The Harrod & Coles Family Heavyweight Cob of the Year** – Horses must exceed 148cm but not exceed 155cm. To be capable of carrying more than 14 stone.

**CLASS 524 – Horse of the Year Show Qualifier 2024 - The Leeman Family Maxi Cob of the Year** – Must exceed 155 cms.

These classes will be run in accordance with the general rules as set out in the Horse of the Year Show rulebook, a copy of which can be downloaded from [www.hoys.co.uk](http://www.hoys.co.uk).

This is a Horse of the Year Show Qualifier, all data given upon entry of this class is provided to Grandstand Media Limited and stored on the Grandstand Entries System. For full policy details please visit [www.grandstandentries.com](http://www.grandstandentries.com).

This class is a qualifying class for Horse of the Year Show, NEC, Birmingham, 9th- 13th October 2024. Qualification will not pass below 5th place, with the exception of the BSHA National Championship Show. Qualification will be verified by the Horse of the Year Show office.

The highest placed unqualified exhibit in in the top 5 in each Open Affiliated class will qualify to compete in the BSHA Supreme of the Year Finals. The Finals will be held at the BSHA National Championship Shows in September 2024. Kindly sponsored by **Black Country Saddlery**, class winners to receive a rug.

## **BRITISH SHOW HORSE ASSOCIATION COB CLASSES**

Entry Fees: £28

Prizes: 1<sup>st</sup> £20, 2<sup>nd</sup> £15, 3<sup>rd</sup> £10

**CLASS 525 – Novice Ridden Show Cob** – Mare or Gelding 4 yrs old & over exceeding 148 cms. For eligibility see Rule 6 D of the BSHA 2024 Rule Book. Non-members can apply for a Day Ticket. **Please note if sufficient entries this class will be split into Cobs and Maxi Cobs. Please see Rule 6D in the 2024 BSHA Rule Book**

**CLASS 526 – Amateur Owner/Ridden Cob** – Mare or Gelding 4 yrs old & over exceeding 148 cms. Open to Horses owned and ridden by an Amateur, the Rider need not be the Owner of the Horse. For eligibility see Rule 6 of the BSHA 2024 Rule Book. Non-members can apply for a Day Ticket.

**COB CHAMPIONSHIP** – 1<sup>st</sup> & 2<sup>nd</sup> prize winners from classes 522 to 526 to compete for **The Jill Bamford Memorial Cup**

## **MOUNTAIN & MOORLAND IN HAND CLASSES**

**To be judged in the Little Rocks Ring 4 at 9am**

**Judge: Mrs A Squires**

Entry Fee: £22

Prizes: 1<sup>st</sup> £15, 2<sup>nd</sup> £10, 3<sup>rd</sup> £5

### **The NPS/ Absorbine M&M In Hand Summer Championship**

Small breed classes are open to Dartmoors, Exmoors, Shetlands, Welsh A's & B's

Large breed are Connemaras, Fells, Dales, New Forest, Highland, Welsh C's & D's

### **CLASS 527 – Small Breed Yearling, 2 or 3 yr old** - colt, filly or gelding

**The Mertrux Challenge Cup & Lid** will be presented in this class.

**CLASS 528 – Small Breed Adult** – mare, stallion or gelding 4 years old or over, mare with or without a foal at foot.

**The Pearlwell Cup** will be presented to the highest placed section A in this class.

### **CLASS 529 – Large Breed Yearling, 2 or 3 yr old** - colt, filly or gelding

**The Dakin Cup** will be presented in this class.

**CLASS 530 – Large Breed Adult** – mare, stallion or gelding 4 years old or over, mare with or without a foal at foot.

**The Cottage Garden Cosmetics Cup** will be presented in this class.

### **MOUNTAIN & MOORLAND INHAND CHAMPIONSHIP**

1<sup>st</sup> & 2nd prize winners in classes 527 & 530 to compete for the **Longcliffe Trophy**

**NPS / Blacketor & Shartor Studs Silver Medal IN-HAND CHAMPIONSHIP** 1<sup>st</sup> prize winners from classes 528-530

To be judged under the Rules of the NPS. NPS Silver Medal Rosettes are only awarded when the owner of the champion pony is a **Qualifying or Life** member of the NPS. A valid membership card must be in the rider's/handler's possession on entering the ring and be produced immediately on request by either the judge or the steward. If the owner of the champion pony is not a member, or the owner's membership card is not immediately produced, the rosette may be awarded to the reserve champion provided they have the required membership card. If the champion pony has previously qualified it is still entitled to the Silver Medal Rosette but the qualification card goes to the reserve champion pony, provided the owner of that pony is a member of the NPS. The Silver Medal Rosette and the qualification card can be awarded no lower than first reserve (third). Foals are not eligible for Silver Medal Championship. Qualifiers are entitled to compete in the final of the Silver Medal Rosette Championship to be held at the NPS Summer Championship Show in August **2025**

***NPS M&M Breed Champions prelim Round Qualifier for the Great British In Hand Show 7th September 2024, Oakridge Arena***

## NPS RIDDEN MOUNTAIN & MOORLAND CLASSES

To be judged in the Little Rocks Ring 4 at 12pm

**Judge: Mrs A Squires**

Entry Fees: £28

Prizes: 1<sup>st</sup> £20, 2<sup>nd</sup> £15, 3<sup>rd</sup> £10

**CLASS 531 – NPS/Showing Classics Mountain & Moorland Open Lead Rein** - Mare or gelding 4 yrs old & over not exceeding 122cms (12hh) registered in the main body of their respective Breed Society stud book. Riders must have attained their 3rd birthday but not reached their 9th birthday before the 1st January in the current year

**The Green Man & Blacks Head Cup** will be awarded to the winner of class 531

**CLASS 532 – NPS/Showing Classics Mountain & Moorland Open First Ridden** - Mare or gelding 4 yrs old & over not exceeding 128cms (12.2hh). registered in the main body of their respective Breed Society stud book. Riders must have attained their 3rd birthday but not reached their 12th birthday before the 1st January in the current year.

**The Dew Skills Cup** will be awarded to the winner of class 532

**MOUNTAIN AND MOORLAND MINI CHAMPIONSHIP** - Open to ponies that have been placed 1<sup>st</sup> or 2<sup>nd</sup> in classes 531 & 532, the winner to be awarded **The Crane Transport Perpetual Challenge Trophy**.

**CLASS 533 – NPS/Partridge & Parr Mountain & Moorland Open Ridden** Dartmoor, Exmoor, Shetlands, Welsh Section A & B - For ponies 5 yrs old & older. Rider any age.

**The K J Beeston Cup** will be awarded to the winner of this class

**CLASS 534 – NPS/Ringside Stud Mountain & Moorland Open Ridden**

New Forest, Connemara, Fell, Highland, Dales, Welsh Section C & D - For ponies 5 yrs old & older. Rider any age

**The Stanning Silver Challenge Cup** will be awarded to the winner of this class

**Also a qualifier for NCPA TOPLINE HORSEBOXES Junior Mountain & Moorland Pony of the Year the highest placed juniors in classes 533 & 534**

**MOUNTAIN & MOORLAND OPEN RIDDEN CHAMPIONSHIP**

1<sup>st</sup> & 2nd prize winners in classes 533 & 534 to compete for **The Hulland Saddlery Cup**

**Working alongside The Horse Trust's Awards for The Healthiest Equine Body Condition 2024**

## **NOVICE RIDDEN HUNTER & THE RIDING CLUB SHOW HORSE CLASS (Unaffiliated)**

**To be judged in the Little Rocks Ring 4 at 1.30pm**

**Judge: Mrs J Griffin**

Entry Fees: £22

Prizes: 1<sup>st</sup> £15, 2<sup>nd</sup> £10, 3<sup>rd</sup> £5.

### **Class 535 - Novice Ridden Hunter (Unaffiliated)**

Mare or gelding, 4years old and over, not having won a first prize of £25 or more in any ridden hunter class.

### **CLASS 536 – The Riding Club Show Horse Class**

Mare or gelding of any type, exceeding 148cms, suitable for all riding club activities. To be judged 50% on manners and an individual show and 50% on conformation. Horses will walk, trot and canter on both reins as a class.

Individual shows will be performed which must include lengthened canter/gallop. Horses will not be ridden by the judge and riders will not be asked to dismount.

**The Fendale Salver** will be awarded to the winner of this class.

## **LOCAL RIDER CLASSES**

**To be judged in the Little Rocks Ring 4 to follow on**

**Judge: Mrs H Noad**

Entry Fees: £22

Prizes: 1<sup>st</sup> £15, 2<sup>nd</sup> £10, 3<sup>rd</sup> £5.

Open to Mares or Geldings, 4yrs and over. Ponies/horses in the local classes, handlers must reside within a radius of 25 miles of the show ground. Turnout will also be taken into consideration

**CLASS 537 – Local Handler** Open to juniors & adults (class maybe split if entries allow, rosettes will be awarded separately if not split) Open to Mares or geldings, any age or height

**The Hawthorn Cup** will be awarded to the winner of class

Open to Mares or Geldings, 4yrs and over. Ponies/horses in the local classes, riders must reside within a radius of 25 miles of the show ground. Competitors will be expected to perform a short show. Classes to be judged 50/50 on rider's ability and horse's manners. Turnout will also be taken into consideration.

**CLASS 538 - Lead Rein or First Ridden** - rider under 10 yrs on the date of the show.

**The Williams and Glyns Cup** will be presented to the winner of this class

### **CLASS 539 – Local Riders aged 18 years & under**

The **Ian Glover Memorial Cup** will be awarded to the winner of class

### **CLASS 540– Local Riders Adults (over 18yrs)**

The **Dommen Cup** will be awarded to the winner of class

**LOCAL CHAMPIONSHIP** - The 1<sup>st</sup> and 2<sup>nd</sup> prize winners from classes 537 & 540 to compete

The champion will receive **The Mary Froggatt Cup**



**Trophies – All trophies are perpetual and will remain the property of Ashbourne Shire Horse Society.**

**Trophies are only released after the winner's details have been entered into our trophy register and signed by the winner (if under 18 years then by a responsible adult)**

**In signing our trophy register you accept responsibility for safe keeping of our trophy whilst it is in your possession. You agree that should this trophy be lost or stolen whilst in your possession you will reimburse Ashbourne Shire Horse Society for its insured value. If the trophy is damaged in any way whilst in your possession it must be returned immediately to our Jewellers for repair at your expense.**

**You also agree to return the trophy by the 30<sup>th</sup> June 2024 to C W Sellors Jewellers' Ashbourne shop in person and in a clean and undamaged condition and you will ensure they have noted the return on the trophy register.**

**You also agree that should your contact details change whilst the trophy is in your possession you will advise our secretary immediately.**

**Ashbourne Show would like to thank our kind and generous sponsors:–**

**Little Rock Equine Vets,  
Shaws Equestrian,  
Su Beardmore & Steph Litherland,  
Sophie Knight – Equine Dentist,  
Thorswood Equine Transport.**

**We hope you enjoy Ashbourne Show**

**Save the date for next year**

**Saturday 16<sup>th</sup> August 2025**

## **REGULATIONS FOR THE SOCIETY'S SHOW**

### **Personal Information Consent - Entrants**

In order to provide a professional and effective service to competitors and entrants to Ashbourne Show, we need to keep a record of personal information. This is information such as your name, contact details and age, and possibly those of family members if appropriate. You may also provide us with dietary or other medical information that will allow us to ensure your safety and convenience whilst at Ashbourne Show.

The Ashbourne Shire Horse Society respects your privacy and will only use your data for the provision, communication and processing of your entry and other requirements and for providing you with information regarding future shows and events. Entrants' information will be published within the show catalogue, and provided to the relevant breed societies and professional and regulatory bodies as necessary and prize-winners will be listed on our website and elsewhere.

We will not otherwise share your personal data with other third parties without your prior consent unless required to do so by law. All personal information is treated as private and confidential; it is recorded electronically on a database and/or in a paper file. You have the right to see any information that we hold about you, and to have your details removed.

- 1.** All exhibits must be bona-fide property of the exhibitor and carry the correct number.

2. All exhibitors are reminded that they compete at their own risk and they should have public liability insurance.
3. Headgear a correctly secured skull cap/riding hat, of a current safety standard, must be worn by all persons when mounted, anywhere on the Showground. All skull caps/riding hats should have a three-point harness, and this must be correctly fastened at all times. In the ring, all skull caps must be worn with a plain dark coloured peaked cover.
4. The judges' decision shall be final and the Council reserves the right to withhold any prizes if, in the opinion of the judges, the exhibits do not possess sufficient merit
5. **All prize money will be paid out on the day of the show from the secretary's tent on the main showground. Money WILL NOT be paid out without the prize money voucher awarded in the ring. Any uncollected prize money will be forfeited. Please note prize money will not be paid out until 1 hour after a class has ended. Any disputes must be addressed with the Light Horse Secretary and may be resolved after the show Prize money awarded to persons under 16 will only be issued if accompanied by an adult.**
6. The Society reserves the right to alter the schedule at its discretion or to merge classes if there are insufficient exhibitors. Entry fees will be refunded for any event cancelled.
7. Any exhibitor wishing to lodge a protest in respect of any animal exhibited at the show in the Light Horse Section must do so in writing within 60 minutes of completion of the class together with a deposit of £20. This sum shall be forfeited if, on investigation by the Council, the protest is not sustained.
8. The Council will not hold itself responsible for any loss or accident whatsoever which may occur on the showground and all entries shall be deemed to have been made on this understanding.
9. Acknowledgement of entry forms, together with the necessary tickets, will be sent by the Secretary to enable exhibitors to check their entries have been received. If you do not receive this acknowledgement at least 7 days before the show, please contact the Light Horse Secretary.
9. Competitors are requested to take particular note of the times of their classes and to be ready in the collecting ring
10. The Society reserves the right to have measured any horse or pony where there is a height stipulation and where certificates issued under the Joint Measurement Scheme cannot be produced as evidence of height. Where applicable, competitors may also be requested to produce birth certificates as proof of age.
11. **EQUINE PASSPORTS Exhibitors are required to have passports for all horses/ponies when competing at the show for each of their exhibits Please ensure you have proof of this as random checks will be made.**
- 11.1 **Equine Flu & Tetanus Vaccinations**  
Equine Influenza and Tetanus vaccinations are a compulsory requirement for all horses attending the Ashbourne Show. The requirement for the first 3 vaccinations is as follows:  
The first 2 vaccinations 21 – 92 days apart,  
a third booster between 150-215 days,  
and an annual booster vaccination within 6 months of the show.  
No horse should enter competitions within 7 days of an EI vaccination.  
Foals should commence vaccinations at 6 months old.  
This rule may be subject to change from guidance from the FEI/BEF and any changes will be notified via the Showing Council and ASAO websites.
12. All foals must be at least 3 weeks old. Stallions and colts 2 yrs old or over must hold a Ministry of Agriculture, Breed Society or NPS Stallion licence, unless otherwise governed by their individual breed society. All handlers of stallions and colts 2 yrs old and over must be 14 yrs old or over.
13. **If late entries are accepted, double the entry fee will be charged, in accordance with the terms and conditions shown under the entry rules listed in this schedule.**
14. Hard hats in accordance with breed society rules must be worn at all times when mounted. In unaffiliated classes all riders must wear hats that meet current safety standards when mounted. Anyone aged 14 or under must wear protective headgear.
15. The Society reserves the right to postpone, cancel, abandon, or curtail the Show due to 'force majeure' or otherwise at its absolute discretion. In no circumstances shall the Society be liable, in contract, tort (including negligence or breach of statutory duty) or otherwise howsoever, and whatsoever the cause thereof (i) for any loss of profit, business, contracts, revenues, or anticipated savings, or (ii) for any special indirect or consequential damage or losses of any nature whatsoever. For the purposes of this Condition, 'Force Majeure' means fire, explosion, flood, lightning, Act of God, act of terrorism, war, rebellion, riot, sabotage, or official strike or similar official labour dispute, or events or circumstances outside the reasonable control of the Society.
16. Mountain and Moorland in hand ponies must be registered with their respective breed society to be eligible to compete & registration numbers must be stated on the entry form.
17. Native ponies entered in affiliated classes must be registered to their relevant breed society to compete.
18. It is strongly recommended that competitors aged 18 or over wear correctly secured Skull Caps/Riding Hats that meet one of the following current Safety Standards: All PAS 015; VG1; ASTM F1163 04a onwards; SNELL E2001; AS/NZS 3838 2003 onwards. It is mandatory for competitors under the age of 18 to wear such skull caps or hats. In the jumping phase of working hunter classes the aforementioned skull caps/riding hats must be worn.
19. Classes held under the rules of the British Show Horse Association. Horses must be registered with the Association and all owners, producers and riders must be Association Members. Riders must be 15 years of age or older. Registration numbers must be quoted on the entry form.  
Horses competing at the Horse of the Year Show and qualifying shows in The Hunter sections of The Sport Horse Breeding of Great Britain classes at their affiliated shows cannot compete in Hack, Cobs and Riding Horse classes at the same show, on the same day and vice versa.  
The highest placed unqualified exhibit in each Open Affiliated class will qualify to compete in the BSHA Supreme of Season Final. The Finals will be held at the BSHA Hunter & National Championship Shows in September 2023.  
Day Tickets - Non-Members may purchase a Day Ticket, they can have up to a maximum of 2 Day Tickets per exhibitor, per horse, per rider, per season. A Day Ticket will allow entry into Amateur, Home Produced, In-Hand, Novice, Working, Young Rider and Open Affiliated classes only, **but will NOT allow entry into RIHS or HOYS qualifying classes.** Horses registered on a Day

Ticket do not require a JMB height certificate. Competitors can apply for a Day Ticket by downloading an application form from the BSHA website.

The BSHA offer a Novice, Amateur and Young Rider Rosette in each Open class and a champion rosette for each section (with the exception HOYS Hunter classes).

The awards will go down the line; there is no limit on how many of these rosettes can be claimed in a year. Please state on your entry form if you are eligible for these.

**20.** The Horse of the Year Show Ridden Hunter and Working Hunter Classes, are affiliated to The British Show Horse Association. Owners, producers and riders must be members of the BSHA, TSR or SHGB and all horses must be registered with the BSHA, TSR or SHGB. Registration numbers must be quoted on entry form. Horses competing at the Horse of the Year Show and qualifying shows in The Hunter sections of The Sport Horse Breeding of Great Britain classes at their Affiliated Shows cannot compete in Hack, Cobs and Riding Horse classes at the same show, on the same day and vice versa. This does not apply to SHB (GB) Ridden Sport Horse classes. Competitors must enter their horses in the appropriate weight section, but the judges shall have the power to transfer exhibits to a different section if they deem it necessary. Any horse which has qualified as a grade A Showjumper or Advanced Event horse as at the 1<sup>st</sup> January in the current year is not eligible to compete in working hunter classes.

**21.** Classes run under the rules of the RoR and all those entering horses and/or participating in the show agree to be bound by the Retraining of Racehorses Rules and Regulations from time to time in force. Horses should be ridden in a snaffle, pelham or simple double bridle. Horses should be plaited. All entries **MUST** be registered with the RoR and include their registration number on the entry form and have **RACED in GB**. All those entering horses and/or participating in the show agree to be bound by the RoR Rules and Regulations from time to time in force. Please be aware that the show will split the class on the horse's last run in a race (NH or Flat) or will provide 2 ride judges should the entries exceed 20. Please mark your entry form accordingly. **Competitors must wear a safety/kite mark hard hat with a chinstrap. Racing injuries and blemishes will be ignored in this series.**

**22.** In the Private Driving classes, all horses and ponies to be 4yrs old and over. **Young Driver** – The driver must be aged 8 years or over on the first day of the show at which they are to compete. A driver under the age of 18 must be accompanied in the vehicle by a competent and responsible person aged 18 years or over, a "responsible adult". Proof of age will be required if necessary. It is the responsibility of the owner/driver (if over 18) or (if the owner/driver is under 18) the responsible adult to ensure that his/her groom/s is/are competent for the purpose of attending to the turnout and aged 8 or over on the day of the show. When in the vehicle grooms, passenger/s and driver must have their feet firmly on the floor of the vehicle or use a suitable fixed footrest. The regulations apply at all times and in all areas of the showground. **Hard Hat Ruling** – All drivers/grooms/passengers under the age of 14 years must wear a correctly fitted hard hat when in a carriage or in attendance to a turnout.

**23.** NPS Qualifying Rounds: These classes are judged under the Rules of the NPS. Ponies must be registered in the main body of their respective Mountain & Moorland Stud Books. Part bred are not eligible for Mountain & Moorland Classes.

Qualifying Rounds for most NPS competitions are open to ponies owned by NPS members and non-members but only ponies owned by adult NPS Qualifying or Life Members are eligible to qualify for the final of the competition at the NPS Summer Championship Show at Malvern 2025.

The highest placed pony, if owned by an NPS member, in each class will qualify for the final. Qualification may pass down to third place if the first and second ponies are already qualified.

NPS/Corscaron Horse Essentials Home Produced Ridden Championship - Riders of Home-Produced ponies (see definition in the NPS Rules Book) can wear a white arm band in classes where this is indicated. These ponies, if owned by NPS members, are then eligible to qualify for the final at the NPS Summer Championship Show. The Owner's Membership cards **MUST** be produced in the ring when requested or the qualification will be forfeit.

**24.** BSPS Classes - Please see Rule 43 & 50 regarding BSPS Hat Rule & Body protectors.

**25.** Any competitor or animal on the showground deemed to be rude, dangerous, out of control or being mistreated can be approached and dealt with by any official of the Ashbourne Show.

**26.** All horses or ponies competing over the age of 15 years old are eligible to be awarded a special rosette for being the highest placed veteran. Please wear a white armband whilst competing to signify this.

**27. The Society reserves the right to reject any entry, for whatever reason.**

**28.** The Society's Veterinary Officers are authorised to refuse permission for any animal or bird to be admitted to, or to have removed from, the Showground any animals affected with contagious or infectious disease, or any deemed not fit to show. Concealment of disease will render the Exhibitor liable to disqualification.

**29** Exhibitors should not bring any diseased or ill animal or bird onto the Show premises, and if under any circumstances this regulation be violated, the exhibitor of the animal or bird will be solely responsible for any claims that may arise for damage or loss to other exhibitors or any other persons, and the Society holds itself free from liability in such cases. Should any animal or bird manifest symptoms of disease or illness during the Show, it must be reported to the Chief Steward of the relevant Section immediately.

**30** The Society has an appointed veterinary surgeon and their role is to deal with requests from judges, stewards and other Society officials and to attend to emergencies that may arise. It is a condition of entry that these veterinary surgeons may on their own authority give to any animal such emergency treatment as they may consider appropriate in the event that the owner or their representative cannot immediately be found. Exhibitors will be required to pay any such veterinary surgeon for the full cost of the treatment administered whether in an emergency as above or if such treatment is requested.



# C·W·SELLORS

FINE JEWELLERY & LUXURY WATCHES



Timepiece  
collections  
presented by

C·W·SELLORS  jura

LUXURY WATCHES



Proud sponsors of  
**Ashbourne Show**

Victoria Square, Ashbourne  
Tel: 01335 342002

Boutiques also at  
Matlock · Bakewell · Buxton · Chesterfield

[www.cwsellers.co.uk](http://www.cwsellers.co.uk)  
[www.jurawatches.co.uk](http://www.jurawatches.co.uk)