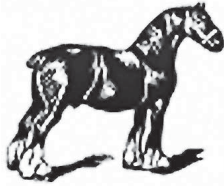


Light Horse Schedule



126th Ashbourne Show

Qualifiers for Horse of the Year – Ridden Hunter, Show
Cobs, Hacks and Horse Working Hunters,
Royal International Ladies Hunters, RoR Tattersalls,
BDS Driving, BSPS & NPS M& M & Silver Medal,
IDHS, SSADL & *Meynell Saddlery SUPREME IN HAND*

**The Polo Ground
Osmaston, Nr Ashbourne, DE6 1LU
Saturday 19th August 2017**

**Light Horse Entries Secretary: Mrs Cheryl Scott
10 Lister Grove, Stallington Village, Blythe
Bridge, Stoke on Trent, Staffs, ST11 9TS
Tel: 07966 625994**

Website: www.ashbourneshow.co.uk

Livestock schedules available on the website

Organised by Ashbourne Shire Horse Society

TIMETABLE (these are Not Before times)

MAIN RING

8.00 a.m.	Classes 101 - 104	Horse of the Year Show Ridden Hunters & Championship
11 a.m.	Classes 105 - 107	BDS Driving Classes

RING 2

8.00 a.m.	Classes 108 - 111	NPS & BPS Heritage Ridden M&M and Championship
10.00am	Classes 112 - 114	The Eques-Train Local Rider Classes and Championship
11.15 a.m.	Class 115	RIHS Ladies Hunter
11.45 a.m.	Classes 116 - 117	Ridden & In Hand Irish Draught and Irish Draught Sport Horses
12.45 p.m.	Class 118	The Blue Chip Flat Ridden Sport Horse Class
2 p.m.	Classes 119 - 122	Mountain & Moorland In-hand and Championships
3.30 p.m.	Classes 123 - 124	Olympia Senior Showing & Dressage Horse, Pony Classes & Championship
4.15p.m	SUPREME INHAND	SUPREME INHAND KINDLY SPONSORED BY MEYNELL SADDLERY

RING 3

8.00 a.m.	Class 125 - 128	Horse of the Year Show Cobs & Championship, Novice & Amateur Cobs
11.30 a.m.	Classes 129 - 130	Horse of the Year Show Hacks & Championship
2.00 p.m.	Classes 131 - 132	Sport Horse Breeding (Unaffiliated)
3.00 p.m.	Class 133	Novice Riding Horse
3.30 p.m.	Class 134 - 135	The Uttoxeter Racecourse Race Horse to Riding Horse Inhand & Ridden
4.15 p.m.	Class 136 - 137	Riding Club Show Horse & Novice Ridden Hunter (Unaffiliated)

RING 4

8.00 a.m.	Class 138	The Eques-Train Unaffiliated Working Hunter
9.30 a.m.	Classes 139 - 140	Novice & Restricted Working Hunters
11.00 a.m.	Classes 141 - 142	Horse of the Year Show Working Hunters & Championship
1.30 p.m.	Classes 143 - 147	The Eques-Train Working Hunter Training Stakes
3.30 p.m.	Class 148	NPS Mountain & Moorland Working Hunter Pony

All the above times are approximate times only. Classes **will not** start before the times shown.
British Show Pony Society Affiliation no - 67/17, Course builder: Mr D Norlander

MEMBERSHIP OF THE ASHBOURNE SHIRE HORSE SOCIETY

The Ashbourne Shire Horse Society would be pleased to welcome new members to the Society upon payment of the Annual Subscription of £25. Membership entitles you to entrance for 1 member, 1 guest and two children under the age of 15, entry to the members enclosure, restaurant, bar and grandstand. You will also receive reduced entry fees.

ENTRY RULES

Entries close 1st August 2017

Entries **received** by this date will be charged at the rate shown in the schedule

Late Entries **received** between 2nd August and 8th August 2017 **ONLINE ONLY** will be charged at **double** the entry rate shown in the schedule (for Horse of the Year Show classes, the Horse of the Year Show contribution is not doubled)

BACS payment is available for entries if preferred, please quote the reference "**HORSE**" on these.

Entry forms can then be emailed to cherylatherton@gmail.com

ONLINE ENTRIES AVAILABLE – www.ashbourneshow.co.uk

NO ENTRIES RECEIVED AFTER 8th AUGUST 2017 WILL BE ACCEPTED

PLEASE NOTE THAT HORSE OF THE YEAR SHOW QUALIFIERS **MUST** BE ENTERED ON THE CORRECT ENTRY FORM

Entries for the following classes can also be taken on the day from any competitor **already** entered in another class. Any such entries will be charged at double the standard entry rate –unaffiliated working hunter, local riders, BSPS ridden M&M, Irish Draughts and Irish Draught sport horses and veterans. Entries on the day for the Heritage WHP, WHP, and the training stakes will be charged at £15 per entry.

WRISTBAND AND VEHICLE PASS ALLOCATION

Exhibitor's entrance wristbands and vehicle passes will be sent out prior to the show and are allocated as follows:

1 Animal	-	2 Wristbands, 1 Vehicle Pass
2-3 Animals	-	3 Wristbands, 1 Vehicle Pass
4-5 Animals	-	4 Wristbands, 2 Vehicle Passes
6-7 Animals	-	5 Wristbands, 2 Vehicle Passes

Please note that no admittance will be granted to the showground if you are not wearing the supplied wristband. Additional admission wristbands for friends and supporters can be purchased at a reduced rate of £10 **ONLY** if purchased at the time of entry.

This show is a qualifier for the N.C.P.A. Pony of the Year Show in September 2017. First and second prize winners in appropriate classes will qualify.

HORSE OF THE YEAR SHOW RIDDEN HUNTER CLASSES

To be judged in the Main Ring at 8.00 am

**Judges: Miss N Maynard, Mold(conformation) and
Miss J Graham, Mansfield (ride)**

Entry Fees: £38 - includes £12 Horse of the Year Show contribution (Ashbourne Shire Horse Society Members £30)

Prizes: 1st £50, 2nd £40, 3rd £30, 4th £20, 5th £15, 6th £10

These classes are held under the rules of The British Show Horse Association (see regulation 21), however the general rules as set out in the Horse of the Year Show Rulebooks take precedence, a copy of which can be downloaded from www.hoys.co.uk. All Riders, Owners, and Producers must be Members of the British Show Horse Association. Horses must be registered with the British Show Horse Association.

CLASS 101 – Horse of the Year Show Qualifier 2017 – Small Show Hunter

Mare or gelding, 4 years old or over, exceeding 148cm (14.2hh approx.) but not exceeding 158 cm (15.2hh approx.) to be ridden. Entries in this Class may not compete in the Show Hunter of the Year, and vice versa. When registering with the BSHA, a current Joint Measurement Board Height Certificate must be done before application.

CLASS 102 - Horse of the Year Show Qualifier 2017 – Catplant Group of Companies Ltd. Lightweight Show Hunter

Mare or gelding 4 yrs old & over capable of carrying up to 12 stone 7lbs (79.5 kgs). Entries in this Class may not compete in the Small Show Hunter of the Year, and vice versa.

CLASS 103 - Horse of the Year Show Qualifier 2017 - Catplant Group of Companies Ltd. Middleweight Show Hunter

Mare or gelding 4 yrs old & over capable of carrying up to 12 stone 7lbs (79.5 kgs) and not exceeding 14 stone (89kgs). Entries in this Class may not compete in the Small Show Hunter of the Year, and vice versa.

CLASS 104 - Horse of the Year Show Qualifier 2017 - Catplant Group of Companies Ltd. Heavyweight Show Hunter

Mare or gelding 4 yrs old & over capable of carrying over 14 stone (89kgs). Entries in this Class may not compete in the Small Show Hunter of the Year, and vice versa.

- Classes 101-104 are qualifiers for the Horse of the Year Show, NEC, Birmingham, 4th – 8th October 2017. Qualification will not pass below third place. Qualification will be verified by the Horse of the Year Show office.

RIDDEN HUNTER CHAMPIONSHIP (SP85) - 1st & 2nd prize-winners from the ridden hunter classes 101 – 104 to compete for **The Cottage Garden Cosmetics Perpetual Challenge Trophy,**

£15 will be awarded to the champion hunter & £10 to the reserve, kindly donated by **Arbormasters**. The Champion will receive an Ashbourne Show Blouson Jacket kindly sponsored by **Pikeur & Eskadron**. The Champion will receive a £40 prize voucher towards the show ring classic glove from the luxury Showing glove range from **I-Quip**, the Reserve Champion will receive a £25 voucher.

The Ronnie Marmont 'Stanning Trophy' - To be judged in the Main ring by **Mr Stuart Shaw** - will be awarded to the exhibit which presents the most pleasing image of horse and rider, combining distinguished and elegant appearance, suitability and fitness of purpose with stylish performance. Two exhibits from each of the ridden hunter classes will be selected during the judging of their classes to compete for this Championship.

- A prize of £10 will be awarded to the highest placed entry in the ridden hunter classes, owned & ridden by an exhibitor residing within a radius of 25 miles of the Show Ground. All eligible entries must wear a white armband.
- **Classes 101-104 are qualifiers for The Blue Chip & IDHS(GB) £2,000 Challenge** (see regulation 22). Please state on entry form if eligible

PRIVATE DRIVING & EXERCISE VEHICLE CLASSES

To be judged in the Main Ring not before 11 am

Judge: Mrs V Hampton, Stevenage

Entry Fees: £18 (Ashbourne Shire Horse Society Members £14)

Prizes: 1st £20 2nd £18, 3rd £10, 4th £5

These classes are qualifiers for the 2017 Osborne Refrigerators BDS National Championships at Driving Addington on 23 September 2017. The highest placed turnout owned and driven by a member of the British Driving Society and eligible for the following Type-Sections disregarding those already qualified down to 6th place in the class will qualify for the 2017 Semi-Finals at Driving Addington. The Championship will immediately follow the Semi-Finals.

Type-Sections

- C - Single non-hackney-type (excluding purebred Registered Welsh) – over 13.2hh
- D - Single non-hackney type (excluding purebred Registered Welsh) – 13.2hh & under
- E - Country turnout – single, pair or tandem
- G - Single purebred Registered Welsh Ponies – Sections A, B & C
- L - Single or Tandem Turnout driven to a two-wheel exercise vehicle

CLASS 105 – Private Driving - Horse or Pony, 4 years and over, driven to a traditional or traditional type vehicle. A traditional vehicle means a vehicle of traditional profile and identifiable type to resemble the design of a carriage built prior to the First World War. The vehicle may be made from modern materials but must have traditional style springing and carriage lights. Pneumatic tyred vehicles, trade turnouts and show wagons are not eligible. The class will be judged together, and prizes will be awarded separately over 13.2hh and under 13.2hh

CLASS 106 – Exercise Vehicles – Open to Horses and ponies, 4 years old and over. A single, pair or tandem driven to a carriage of non-traditional type design and includes those with pneumatic tyres specifically designed for carriages (i.e. not car tyres). Judging will include general cleanliness, correct fitting of harness and vehicle suitability.

PRIVATE DRIVING & EXERCISE VEHICLE Championship 1st & 2nd Prize winners from classes 105 & 106

Kindly Judged by Mrs J Bale, Sutton on the Hill

CLASS 107 – CONCOURS D'ELEGANCE – Open to singles, pairs, multiples, 4 years old and over, to a traditional type of vehicle also open to the Exercise Vehicles. The essence of the class is the word 'elegance' and the winner will be the turnout, which, in the opinion of the judge, presents the most elegant effect. Entry is free to those entered in either of the above driving classes, otherwise entry fee is as above.

Ashbourne Show will award a prize to the highest placed junior whip in classes 105 - 107

NPS & B.S.P.S. "HERITAGE" RIDDEN M & M CLASSES

To be judged in the Main Ring at 8 a.m.

Judge: Mr R James, Rugley

Entry Fees: £18 (Ashbourne Shire Horse Society Members £14), (see regulations 18 & 19)

Prizes: 1st £20 2nd £18, 3rd £10, 4th £5

CLASS 108 - The B.S.P.S. Heritage Mountain & Moorland Open Lead Rein - Mare or gelding 4 yrs old & over not exceeding 122cms (12hh). Rider must not have attained their 9th birthday before 1st January in the current year.

- There will be a special rosette for the best Shetland in this class.
- **This class is also a qualifier for the NPS/Showing Classics M & M Leading Rein national Championship to be held at the NPS Summer Championship 2018**

CLASS 109 - The B.S.P.S. Heritage Mountain & Moorland Open First Ridden - Mare or gelding 4 yrs old & over not exceeding 128cms (12.2hh). Rider must not have attained their 12th birthday before 1st January in the current year.

- There will be a special rosette for the best Shetland in this class.
- These classes are qualifiers for the BSPS Summer Championship Show, BSPS 'Black Country Saddles' Best Rider, BSPS 'Classic Security' UK Limited Challenge and the BSPS Premier League.
- The first prize-winner from classes 108 & 109 will qualify for the BSPS "Industrial Salt Supplies" WOW Factor (Winner of Winners).
- **This class is also a qualifier for the NPS/Showing Classics M & M First Ridden national Championship to be held at the NPS Summer Championship 2018**
- **These classes are qualifiers for the Senior Showing & Dressage Limited Championship Show, 9th - 10th September 2017** (see Regulation 23).

MOUNTAIN AND MOORLAND MINI CHAMPIONSHIP - Open to ponies that have been placed 1st or 2nd in classes 101 & 102, the winner to be awarded **The Crane Transport Perpetual Challenge Trophy**. The Champion will receive a £10 feed voucher and the Reserve a £5 feed voucher kindly donated by **SPILLERS®**.

CLASS 110 - The B.S.P.S Heritage Mountain & Moorland Open Ridden -Dartmoor, Exmoor, Shetlands, Welsh Section A & B - For ponies 4 yrs old & older. Rider any age.

- There will be a special rosette for the best Shetland in this class.

CLASS 111 - The B.S.P.S Heritage Mountain & Moorland Open Ridden – New Forest, Connemara, Fell, Highland, Dales, Welsh Section C & D - For ponies 4 yrs old & older. Rider any age.

- These classes are qualifiers for the BSPS Summer Championship Show, BSPS 'Black Country Saddles' Best Rider, BSPS 'Classic Security' UK Limited Challenge and the BSPS Premier League.
- The first prize-winners from classes 110 - 111 will qualify for the BSPS "Industrial Salt Supplies" WOW Factor (Winner of Winners).
- **Classes 110-111 are also qualifiers for the NPS/Ringside Stud M & M Open Ridden National Championship to be held at the NPS Summer Championship 2018**
- **These classes are qualifiers for the Senior Showing & Dressage Limited Championship Show, 9th - 10th September 2017** (see Regulation 23).

MOUNTAIN & MOORLAND OPEN RIDDEN CHAMPIONSHIP – 1st and 2nd prize winners in classes 110 & 111 to compete for the **Speedway Perpetual Challenge Trophy**.

THE EQUES-TRAIN LOCAL RIDER CLASSES

To be judged in Ring 2 at 10 a.m.

Judge: Mr K Baskeyfield, Alfreton

Entry Fee: £12 (Ashbourne Shire Horse Society Members £10)

Vouchers kindly donated by **The Eques-Train:**

1 st Prize	£20 voucher
2 nd Prize	£15 voucher
3 rd Prize	£10 voucher
4 th Prize	£5 voucher

A rosette will be awarded to each competitor

- Ponies/Horses in the local classes not to have won a prize of £10 or more in any affiliated showing classes prior to August in the current year & riders must reside within a radius of 25 miles of the Show Ground. Competitors will be expected to perform a short show. Classes to be judged 50/50 on rider's ability and horses manners. Turnout will also be taken into consideration.

CLASS 112 –Lead Rein or First Ridden - rider under 10 yrs on the date of the show.

The Williams and Glyns Trophy will be presented to the winner of this class

- Rider and Pony Combinations competing in this class may NOT enter any other Local Rider classes

CLASS 113 –Local Riders aged 14 years & under

CLASS 114 –Local Riders aged over 14 years

LOCAL CHAMPIONSHIP - The 1st and 2nd prize winners from classes 112 & 114 to compete for the **Nimrod Trophy**

<u>ROYAL INTERNATIONAL HORSE SHOW LADIES HUNTER</u>
--

To be judged in Ring 2 at 11.15 a.m.

Judge: Miss M Traves , York

Entry Fees: £30 (Ashbourne Shire Horse Society Members £22) - includes the RIHS levy of £9

Prizes: 1st £35, 2nd £30, 3rd £20, 4th £10

- This class is run under the rules of SHB(GB) and all horses, owners & riders have to be registered with SHB(GB). Day Ticket = £30 (this entitles competitors to compete at a maximum of 1 show in the year – it covers owner and rider membership together with horse registration for that show). If the class is a qualifying class for RIHS, in order for the qualification to be valid, application for full owner/rider membership and horse registration must be received in the SHB(GB) office within 14 days.

Class 115 –Ladies Hunter - Mare or gelding four years old or over to be ridden by a lady side-saddle. This class is a qualifier for the 2017 RIHS. The two highest placed horses in each class will qualify to enter at the RIHS. No horse lower than second in its class will qualify.

The Hawthorn Perpetual Challenge Trophy will be awarded to the winner of this class. The winner of this class will also receive an Ashbourne Show Blouson Jacket kindly sponsored by **Pikeur & Eskadron.** The winner will receive a £40 prize voucher towards the show ring classic glove from the luxury Showing glove range from **I-Quip** and the reserve will receive a £25 voucher.

- **This class is a qualifier for The Blue Chip & IDHS(GB) £2,000 Challenge** (see regulation 22). Please state on entry form if eligible

<u>IRISH DRAUGHT & IRISH DRAUGHT SPORT HORSES</u>
--

To be judged in Ring 2 at 11.45 a.m.

Judge: Mrs H A Milner, Much Wenlock (conformation) Mr A Fradley, Belper (ride)

- The following classes are affiliated to the Irish Draught Horse Society (GB) (see Regulation 25)

Entry Fees: £18 (Ashbourne Shire Horse Society Members £14)

Prizes: 1st £20, 2nd £18, 3rd £10, 4th £5

CLASS 116 - Ridden Irish Draught & Irish Draught Sport Horse - 4 years old and over, mare, stallion or gelding, registered on the Irish Draught or ID Sport Horse Registers. Horses will be ridden by the judge. If sufficient entries this class will be split into Pure Breds and ID Sport Horses.

Judge: Mrs H A Milner, Much Wenlock (conformation)

Entry Fee: £15 (Ashbourne Shire Horse Society Members £12)

Prizes: 1st £18, 2nd £15, 3rd £10

CLASS 117 - In Hand Irish Draught & Irish Draught Sport Horse - 4 years old and over, stallion, mare or gelding registered on the Irish Draught Breed Registers or Irish Draught Sport Horse Registers. If sufficient entries this class will be split into Pure Breds and ID Sport Horses.

<u>RIDDEN SPORT HORSE CLASS</u>
--

To be judged in Ring 2 at 12.45 a.m.

Judge: Miss M Traves, York

Entry Fee: £18 (Ashbourne Shire Horse Society Members £14)

Prizes: Vouchers: 1st £20, 2nd £15, 3rd £10, 4th £5

A Blue Chip Cap & Qualifying rosette will be awarded to every competitor who qualifies.

- This class is run under the rules of SHB(GB) (see Regulation 16). Horses have to be registered with SHB(GB) and riders and owners must be SHB(GB) members. Day Ticket = £30 (this entitles competitors to compete at a maximum of 1 show in the year – it covers owner and rider membership together with horse registration for that show)

Class 118 - Blue Chip Four, Five, Six Year Old & Over Flat Ridden Sport Horse – This class is a qualifier for the Blue Chip £400 Flat Ridden Sport Horse Championship to be held at The National Hunter Supreme Championship Show 2018. Horses to be shown on the flat and will not be required to jump. Snaffle bridles must be worn. Horses will not be ridden by the judge but will be required to give a short individual show of walk, trot & canter of approximately 1 minute, to be awarded marks out of a possible 20 for each pace. Lengthened strides in trot and canter must be shown. Marks, all horses are required for a conformation assessment to be awarded marks out of a possible 50. A horse may only qualify once and if already qualified the qualification will pass down the line – the best 4yro, 5yro & the best 6yro & over, enabling 3 horses to qualify for the finals per qualifying class. In the event that there are no horses from a particular age group, the qualification will pass down the line.

MOUNTAIN & MOORLAND IN HAND CLASSES

To be judged in Ring 2 at 2 p.m.

Judge: Mrs J James, Rugeley

The NPS/HIGHBROOK STUD M&M In Hand Summer Championship

Entry Fee: £15 (Ashbourne Shire Horse Society Members £12)

Prizes: 1st £20, 2nd £15, 3rd £10

A rosette will be awarded to the highest placed yearling, 2 yr old and 3 yr old

Small breed classes are open to Dartmoors, Exmoors, Shetlands, Welsh A's & B's

Large breed classes are open to Connemaras, Fells, Dales, New Forest, Highland, Welsh C's & D's
(See Regulation 17)

CLASS 119 –Small Breed Yearling, 2 or 3 yr old - colt, filly or gelding

CLASS 120 – Small Breed Adult - mare, stallion or gelding 4 years old or over, mare with or without a foal at foot. There will be a rosette for the best foal in this class

The Pearlwell Perpetual Challenge Trophy will be presented to the highest placed section A in this class.

CLASS 121 –Large Breed Yearling, 2 or 3 yr old - colt, filly or gelding

CLASS 122 – Large Breed Adult - mare, stallion or gelding 4 years old or over, mare with or without a foal at foot. There will be a rosette for the best foal in this class

- **Classes 120 & 122 are qualifiers for the Senior Showing & Dressage Limited Championship Show, 9th - 10th September 2017** (see Regulation 23).

SUPREME IN HAND CHAMPIONSHIP – 1st and 2nd prize winners from classes 119 to 122 to compete for **The Mary Froggatt Trophy** and the **NPS In Hand Silver Medal Rosette Championship sponsored by KILMANNAN STUD**

- To be judged under the Rules of the NPS by **Mrs J James**. NPS Silver Medal Rosettes are only awarded when the owner of the champion pony is a **Qualifying or Life** member of the NPS. A valid membership card must be in the rider's/handler's possession on entering the ring and be produced immediately on request by either the judge or the steward. If the owner of the Champion pony is not a member, or the owner's membership card is not immediately produced, the rosette may be awarded to the Reserve Champion provided they have the required membership card. If the Champion pony has previously qualified it is still entitled to the Silver Medal Rosette but the qualification card goes to the Reserve Champion pony, provided the owner of that pony is a member of the NPS. The Silver Medal Rosette and the qualification card can be awarded no lower than first Reserve (third). Foals are not eligible for Silver Medal Championships.. Qualifiers are entitled to compete in the final of the Silver Medal Rosette Championship to be held at the NPS Summer Championship Show in August **2018**

OLYMPIA SENIOR SHOWING & DRESSAGE HORSE & PONY CLASSES

To be judged in Ring 2 at 3.30 p.m.

Judge: Mr K Baskeyfield, Alfreton

- These classes are affiliated to Senior Showing & Dressage Limited (See Regulation 23).
- **1ST TO 3RD IN EACH CLASS WILL RECEIVE A £10 VOUCHER KINDLY SPONSORED BY ANTHONY EVANS INSURANCE**

These classes are kindly sponsored by Pool House Equine Clinic

CLASS 123 – IN HAND OPEN MIXED AGE

For horses/ponies over the age of 15

Entry Fee: £15 (Ashbourne Shire Horse Society Members £12)

Prizes: 1st £18, 2nd £15, 3rd £10

- £10 will be awarded to the highest placed horse, aged 25 years and over. Eligible entries to wear a white armband.

CLASS 124 – RIDDEN OPEN MIXED AGE

For horses/ponies over the age of 15.

Entry Fees: £18 (Ashbourne Shire Horse Society Members £14)

Prizes: 1st £20 2nd £18, 3rd £10, 4th £5

- £10 will be awarded to the highest placed horse, aged 25 years and over. Eligible entries to wear a white armband.

SENIOR HORSE & PONY CHAMPIONSHIPS - 1st and 2nd prize winners from classes 123 & 124 to compete for the **Ian Glover Memorial Trophy**.

- **These classes are qualifiers for the Senior Showing & Dressage Limited Championship Show, 9th - 10th September 2017** (see Regulation 23).

***SUPREME IN HAND CHAMPIONSHIP KINDLY SPONSORED BY MEYNELL SADDLERY
BASED IN BIGGIN BY HULLAND, ASHBOURNE 07970 103934
ALL IN HAND CHAMPIONS AND RESERVES WILL QUALIFY FROM ALL IN HAND
CLASSES THROUGHOUT THE DAY. WINNER TO RECEIVE A SASH, JACKET, £25
VOUCHER, AND THE HULLAND TROPHY, RESERVE TO RECEIVE A SASH AND JACKET***

RIDDEN COB CLASSES

To be judged in Ring 3 at 8.00 a.m.

Judges: Mr N Swallow, Ludlow (conformation) & Mr J Cook, Mansfield (ride)

Entry Fees: £38 - includes £12 Horse of the Year Show contribution (Ashbourne Shire Horse Society Members £30)

Prizes: 1st £50, 2nd £40, 3rd £30, 4th £20, 5th £15, 6th £10

These classes are held under the rules of The British Show Horse Association (see regulation 20), however, Horse of the Year Show Rules take precedence, a copy of which can be downloaded from www.hoys.co.uk. All Riders, Owners, and Producers must be Members of the British Show Horse Association. Horses must be registered with the British Show Horse Association.

CLASS 125 - Horse of the Year Show Qualifier 2017 – Lightweight Cob of the Year - Mare or Gelding 4 yrs old or over exceeding 148 cms but not exceeding 155 cms capable of carrying up to 14 stone.

CLASS 126 - Horse of the Year Show Qualifier 2017 – Heavyweight Cob of the Year - Mare or Gelding 4 yrs old or over exceeding 148 cms but not exceeding 155 cms, capable of carrying more than 14 stone.

- These classes are qualifiers for the Horse of the Year Show , NEC, Birmingham, 4th - 8th October 2017. The first prize winner will qualify to compete at the final. If already qualified the second will qualify, if the first and second are already qualified then the third will go forward and so forth to fifth place. Qualification will be verified by the Horse of the Year Show Office. In accordance with BSHA Rules the annual BSHA Horse of the Year Show fee of £15 must have been paid to BSHA **before** the entry is made if the Exhibitor wishes to qualify. The BSHA Horse of the Year Show fee cannot be paid in retrospect. This fee is not the Horse of the Year Show contribution, which goes to Grandstand Media Ltd.

THE COB CHAMPIONSHIP - 1st & 2nd prize winners from classes 125 & 126 to compete for **The Jill Bamford Trophy**. The Champion will also receive an Ashbourne Show Blouson Jacket kindly sponsored by **Pikeur & Eskadron**. The Champion will receive a £40 prize voucher towards the show ring classic glove from the luxury showing glove range from **I-Quip**, the Reserve Champion will receive a £25 voucher.

- **These classes are qualifiers for The Blue Chip & IDHS(GB) £2,000 Challenge** (see regulation 22). Please state on entry form if eligible

Entry Fees: £18 (Ashbourne Shire Horse Society Members £14)

Prizes: 1st £20, 2nd £18, 3rd £10, 4th £5

CLASS 127 - Novice Ridden Show Cob – Mare or Gelding 4 yrs old & over exceeding 148 cms. For eligibility see Rule 7E of the BSHA 2017 Rule Book. Non-members can apply for a Day Ticket. **Please note if sufficient entries this class will be split into Cobs and Maxi Cobs.**

CLASS 128 - Amateur Owner/Rider Cob - Mare or Gelding 4 yrs old & over exceeding 148 cms. Open to Horses owned and ridden by an Amateur, the Rider need not be the Owner of the Horse. For eligibility see Rule 7A-C of the BSHA 2017 Rule Book. Non-members can apply for a Day Ticket.

- **These classes are qualifiers for The Blue Chip & IDHS(GB) £2,000 Challenge** (see regulation 22). Please state on entry form if eligible
- **Classes 127 & 128 are qualifiers for the Senior Showing & Dressage Limited Championship Show, 9th - 10th September 2017** (see Regulation 23).

HORSE OF THE YEAR SHOW HACK CLASSES

To be judged in Ring 3 at 11.30 a.m.

Judges: Mr N Swallow, Ludlow (conformation) & Mr J Cook, Mansfield (ride)

Entry Fees: £38 - includes £12 Horse of the Year Show contribution (Ashbourne Shire Horse Society Members £30)

Prizes: 1st £50, 2nd £40, 3rd £30, 4th £20, 5th £15, 6th £10

These classes are held under the rules of The British Show Horse Association (see regulation 20), however, Horse of the Year Show Rules take precedence, a copy of which can be downloaded from www.hoys.co.uk. All Riders, Owners, and Producers must be Members of the British Show Horse Association. Horses must be registered with the British Show Horse Association

CLASS 129 – Horse of the Year Show Qualifier 2017 – Brereton Small Hack

Mare or gelding 4 yrs old & over exceeding 148cms but not exceeding 154cms

CLASS 130 – Horse of the Year Show Qualifier 2017 – Large Hack -

Mare or gelding 4 yrs old & over exceeding 154cms but not exceeding 160cms

These classes are qualifiers for the Horse of the Year Show, NEC, Birmingham, 4th - 8th October 2017. The first prize winner will qualify to compete at the final. If already qualified the second will qualify, if the first and second are already qualified then the third will go forward and so forth to fifth place. Qualification will be verified by the Horse of the Year Show office. In accordance with BSHA Rules the annual BSHA Horse of the Year Show fee of £15 must have been paid to BSHA **before** the entry is made if the Exhibitor wishes to qualify. The BSHA Horse of the Year Show fee cannot be paid in retrospect. This fee is not the Horse of the Year Show contribution, which goes to Grandstand Media Ltd.

THE HACK CHAMPIONSHIP - 1st & 2nd prize winners from classes 129 & 130 to compete for **The Dave Bowman Leatherland Perpetual Challenge Trophy**. The Champion will also receive an Ashbourne Show Blouson Jacket kindly sponsored by **Pikeur & Eskadron**. The Champion will receive a £40 prize voucher towards the show ring classic glove from the luxury showing glove range from **I-Quip**, the Reserve Champion will receive a £25 voucher.

SPORT HORSE BREEDING CLASSES (Unaffiliated)

Horses in these classes do not need to be registered (not SHB (GB) classes)

To be judged in Ring 3 at 2.00 p.m.

Judge: Mr D Machin, Market Drayton

Entry Fee: £15 (Ashbourne Shire Horse Society Members £12)

Prizes: 1st £18, 2nd £15, 3rd £10

CLASS 131 - Sport Horse Brood Mare - exceeding 148cms (14.2hh), 4 yrs old or over with or without own foal at foot.

The Green Man & Black's Head Royal Hotel Perpetual Challenge Trophy along with a rosette will be awarded to the best Foal in this class.

The Longcliffe Perpetual Challenge Trophy will be awarded to the winner of this class.

CLASS 132 - Sport Horse Yearling, 2 or 3 yr old - colt, filly or gelding foaled in 2016/2015/2014.

The Ferndale Salver will be awarded to the winner of the class

NOVICE RIDING HORSE CLASS

To be judged in Ring 3 at 3.00 p.m.

**Judges: Mr N Swallow, Ludlow (conformation)
& Mr J Cook, Mansfield (ride)**

This class is held under the rules of the British Show Horse Association (see Regulation 20).

Entry Fees: £18 (Ashbourne Shire Horse Society Members £14)

Prizes: 1st £20 2nd £18, 3rd £10, 4th £5

CLASS 133 - Novice Riding Horse – Mare or Gelding 4 yrs old & over, exceeding 148cms. For eligibility see Rule 7E of the BSHA 2017 Rule Book. Non-members can apply for a Day Ticket.

- **This class is a qualifier for The Blue Chip & IDHS(GB) £2,000 Challenge** (see regulation 22). Please state on entry form if eligible
- **This class is a qualifier for the Senior Showing & Dressage Limited Championship Show, 9th - 10th September 2017** (see Regulation 23).

The Royal Bank of Scotland Salver will be awarded to the winner of this class

THE UTTOXETER RACECOURSE - RACE HORSE TO RIDING HORSE CLASS

To be judged in Ring 3 at 3.30 p.m.

Judges: Mrs G Oakes, Harriseahead (conformation) & Miss G Gostlelow, Dale Abbey (ride)

Entry Fees: £18 (Ashbourne Shire Horse Society Members £14)

Prizes: 1st £20 2nd £18, 3rd £10, 4th £5

The class will be run under the rules of RoR (see Regulation 26)

This class is kindly sponsored by Uttoxeter Racecourse

Class 134 RoR OPEN In Hand Show Series Qualifier (Formally TARRA)

Open to all RoR registered horses, 3yrs and over, fillies, mares and geldings. Horses that have raced abroad or been in training are also eligible.

Blemishes caused through racing will be ignored.

The first three horses will qualify.

This class is a qualifier for the RoR OPEN In Hand Showing Series FINAL at the RoR National Championship Show at Aintree, August 2017.

Rosettes 1st - 6th. 2

Prizes at the final- 1st £30 plus RoR jacket, 2nd £20, 3rd £10, 4th £10

Class 135 RoR AMATEUR Ridden Show Series Qualifier (Formally TARRA)

Open to all RoR and NR registered horses, 4yrs and over, mares and geldings, owned, produced and ridden by an Amateur.

The Series is open to AMATEURS only – those employed in racing will be allowed to compete. Class will be judged under 'riding horse' format without 'type' being taken into consideration. Blemishes caused through racing will be ignored. The first three horses will qualify.

The Judge will not ride at the qualifier but will ride in the final.

This class is a qualifier for the RoR AMATEUR Ridden Show Series FINAL at the RoR National

Championship Show at Aintree, August 2017.

Rosettes 1st - 6th.

Prizes at the final - 1st £40 plus RoR jacket, 2nd £30, 3rd £20, 4th £10

Amateur definition:

An amateur is a person who for the purpose of RoR classes does not/has not during the current season or previous season: Engaged in breeding, livery, buying or selling, dealing or hiring horses (for the show ring) in a commercial capacity. Horses must not have been stabled at or reside in a Professional Producer's/Trainer's yard (in the current season or previous season).

Riders must not have ridden any animals produced by a Professional/Trainer in the current or previous season.

Horses and riders must not have received any help from a Professional Producer/Trainer at a SHOW in the current or previous season. Horses must not have been ridden at a show by a rider who has ridden for a Professional/Producer Trainer in the current or previous season. Any breaches of this ruling will be taken seriously and will result in disqualification from future classes.

NOVICE RIDDEN HUNTER & THE RIDING CLUB SHOW HORSE CLASS (Unaffiliated)

To be judged in Ring 3 at 4.15 p.m.

Judge: Mr G Oakes, Harriseahead

Entry Fees: £12 (Ashbourne Shire Horse Society Members £10)

Class 136 - Novice Ridden Hunter

Mare or gelding, 4years old and over, not having won a first prize of £25 or more in any ridden hunter class.

CLASS 137 – The Riding Club Show Horse Class

Mare or Gelding of any type, exceeding 148cms suitable for all Riding Club activities. To be judged 50% on manners and an individual show and 50% on conformation. Horses will walk, trot and canter on both reins as a class.

Individual shows will be performed which must include lengthened canter/gallop. Horses will not be ridden by the judge and riders will not be asked to dismount.

THE EQUES-TRAIN UNAFFILIATED WORKING HUNTER

To be judged in Ring 4 at 8.00 a.m.

Judge – Mrs G Oakes, Harriseahead

Entry Fees: £12 (Ashbourne Shire Horse Society Members £10)

Prize Vouchers kindly donated by **The Eques-Train**: 1st £25, 2nd £20, 3rd £15, 4th £10

CLASS 138 – The Eques-Train Unaffiliated Working Hunter

Mare, gelding or stallion (competing stallions must have a red, white and blue ribbon displayed in their tail) 4 yrs old & over exceeding 148cms (14.2hh). Competitors in this class do not need to be registered with any society. Open to riders aged 16 or over. Fence height will be a maximum 2'9".

The Eques-Train Championship Trophy will be given to the winner of this class.

- This class is a qualifier for the Equestrian Life Championship Show 2017.
- **This class is a qualifier for The Blue Chip & IDHS(GB) £2,000 Challenge** (see regulation 22). Please state on entry form if eligible
- **This class is a qualifier for the Senior Showing & Dressage Limited Championship Show, 9th - 10th September 2017** (see Regulation 23).

NOVICE & RESTRICTED WORKING HUNTER CLASSES

To be judged in Ring 4 at 9.30 a.m.

Judges: Miss D Heath, Sandbach (ride) & Mr D Machin, Market Drayton (conformation)

Entry Fees: £18 (Ashbourne Shire Horse Society Members £14), (see regulations 18 & 19)

Prizes: 1st £20 2nd £18, 3rd £10, 4th £5

- These classes will be judged under SHB (GB) 2016 Rules (see Regulation 16). Owners, Riders and Producers of horses competing in any ridden hunter or ridden sport horse classes run in accordance with these rules must be Members of the Society. Working Hunters may complete 'Hors Concours' in Novice or Restricted Working Hunter Classes in the jumping phase only at the discretion of the show secretary but the horse cannot compete in any other Working Hunter classes for the duration of that show. Day Ticket = £30 (this entitles competitors to compete at a maximum of 1 show in the year – it covers owner and rider membership together with horse registration for that show).

CLASS 139 - Novice Working Hunters -

Mare, stallion or Gelding, 4 years old or over, exceeding 148cms (competing stallions must have a red, white and blue ribbon displayed in their tail). Riders any age. All rules and regulations as per the SHB (GB) 2016 Handbook. Maximum height of fences 3' 3" (1.00m).

The K. J. Beeston Challenge Cup will be awarded to the winner of this class

CLASS 140 - Restricted Working Hunter

Mare, gelding or stallion 4 years old and over (competing stallions must have a red, white and blue ribbon displayed in their tail). All rules and regulations as per the SHB (GB) 2016 Handbook. Maximum height of fences 3' 6" (1.07m).

The R Dakin Challenge Cup will be awarded to the winner of this class.

- **These classes are qualifiers for The Blue Chip & IDHS(GB) £2,000 Challenge** (see regulation 22). Please state on entry form if eligible

HORSE OF THE YEAR SHOW WORKING HUNTER CLASSES

To be judged in Ring 4 at 11.00 a.m.

Judges: Miss D Heath, Sandbach (ride) & Mr D Machin, Market Drayton (conformation)

Entry Fees: £38 - includes £12 Horse of the Year Show contribution (Ashbourne Shire Horse Society Members £30)

Prizes: 1st £50, 2nd £40, 3rd £30, 4th £20, 5th £15, 6th £10

- Held under the rules of the British Show Horse Association (see regulations 21), however, Horse of the Year Show rules take precedence, a copy of which can be downloaded from www.hoys.co.uk. All riders, Owners and Producers must be Members of the British Show Horse Association. Horses must be registered with the British show Horse Association.
- Failure to jump in the correct section will result in elimination
- Marks must be awarded in the following way:

PHASE I	(60
MARKS)	
A: JUMPING POINTS	40 MARKS
B: STYLE WHILE JUMPING	20 MARKS
PHASE II	(40 MARKS)
C: CONFORMATION	20 MARKS
D: RIDE	20 MARKS
- In the event of equality the CONFORMATION MARK from Phase II will take precedence, followed by the RIDE MARK, and then the STYLE MARK. Part One (Jumping) will be judged first, without a jump-off. All clear rounds and any other horses the judges may require will go forward to the next part. A rider can ride up to two horses in the jumping phase but then must select only one horse to take forward into the ride and conformation section if so required (no change of rider is allowed).

This class is a qualifying class for Horse of the Year Show, NEC, Birmingham, 4th – 8th October 2017. Qualification will not pass below 3rd place. Qualification will be verified by the Horse of the Year Show office.

These classes are kindly sponsored by Sophie Knight, Equine Dentist

CLASS 141 - Horse of the Year Show Qualifier 2017 – Cuddy Lightweight Working Hunter

- Mare, gelding or stallion (competing stallions must have a red, white & blue ribbon displayed in their tail) 4 yrs old & over exceeding 148cms (14.2hh) capable of carrying 12.7 stone & under. Small Hunters are to be included in this category. Fences will not exceed 1.14 m (3'9") in height. There should be a minimum of 8 fences and a maximum of 12 fences. The course must contain a combination and should contain a water tray.

CLASS 142 - Horse of the Year Show Qualifier 2017 – Cuddy Heavyweight Working Hunter

- Mare, gelding or stallion (competing stallions must have a red, white & blue ribbon displayed in their tail) 4 yrs old & over exceeding 148cms (14.2hh) capable of carrying 12.7 stone & over. Middleweight Hunters to be included in this category. Fences will not exceed 1.14 m (3'9") in height. There should be a minimum of 8 fences and a maximum of 12 fences. The course must contain a combination and should contain a water tray.

HORSE OF THE YEAR SHOW CUDDY WORKING HUNTER CHAMPIONSHIP – 1st & 2nd prize winners in classes 141 & 142 will go forward to the Championship. **The Stanning Silver Challenge Cup** will be awarded to the winner of this class. The Champion will also receive an Ashbourne Show Blouson Jacket kindly sponsored by **Pikeur & Eskadron**. The Champion will receive a £40 prize voucher towards the show ring classic glove from the luxury Showing glove range from **I-Quip**, the Reserve Champion will receive a £25 voucher.

The Champion will qualify to compete at the final. If already qualified the second will qualify, if the first and second are already qualified then the third will go forward. The four horses forward in the Working Hunter Championship must all be placed as any one of the top three could be eligible for Horse of the Year Show qualification. Qualification will be verified by the Horse of the Year Show office.

- A prize of £10 will be awarded to the highest placed entry in the working hunter classes, owned & ridden by an exhibitor residing within a radius of 25 miles of the Show Ground. All eligible entries must wear a white armband.
- **These classes are qualifiers for The Blue Chip & IDHS(GB) £2,000 Challenge** (see regulation 22). Please state on entry form if eligible.

<u>THE EQUES-TRAIN WORKING HUNTER TRAINING STAKES</u>
--

To be judged in Ring 4 at 1.30 p.m.

Judges: Mr K Baskeyfield, Alfreton & Mrs G Oakes, Harriseahead

Entry Fee: £12 (Ashbourne Shire Horse Society Members £10)

Prize Vouchers kindly donated by **The Eques-Train**: 1st £15, 2nd £13, 3rd £11, 4th £10,

Open to horses and ponies 4 years old and over. Riders of any age. Animals may be entered in more than one class in this section. Animals will be required to jump a course of fences, they will then be asked to give a short show including a change of rein and a gallop (in Ring 4). Animals can be plaited or unplaited and in any suitable tack. The marks will be in accordance with WHP. Ponies may NOT be shown on the lead rein.

CLASS 143 – Tiny-Tots Challenge

Cross poles only. Open to riders 9yrs and under on the date of the show (no Lead-reins).

CLASS 144 – Starter Training Stakes

Maximum height of fences 1'6" (45 cms). Open to riders aged 9 years and under on the date of the show.

CLASS 145 – Training Stakes

Maximum height of fences 1'6" (45 cms)

CLASS 146 – Training Stakes

Maximum height of fences 2' (60 cms)

CLASS 147 – Training Stakes –Maximum height of fences 2'6" (76 cms)

NPS MOUNTAIN & MOORLAND WORKING HUNTER PONY

To be judged in Ring 4 not before
3.30 p.m.

Judges: Mr R James, Rugley

Entry Fees: £12 (Ashbourne Shire Horse Society Members £10)

CLASS 148 –Mountain & Moorland Open W.H.P Mixed Height

Stallions, mares & geldings 4 yrs old & over, riders any age. Ponies must jump in their correct height section. Riders may ride more than one pony providing the animals are of a different height section.

- **This class is also a qualifer for the NPS/Topspec M & M Working Hunter National Championship to be held at the NPS Summer Championship 2018**
- **The Eques-Train** has kindly donated a special rosette to be awarded to the highest placed entry in this class owned & ridden by exhibitors residing within a radius of 10 miles of the Show Ground. All eligible entries must wear a white armband.
- There will be a special rosette for the best Shetland in this class.
- **This class is a qualifier for the Senior Showing & Dressage Limited Championship Show, 9th - 10th September 2017** (see Regulation 23).

REGULATIONS FOR THE SOCIETY'S SHOW

1. All exhibits must be bona-fide property of the exhibitor and carry the correct number.
 2. All exhibitors are reminded that they compete at their own risk and that they should have legal liability insurance.
 3. The judge's decision shall be final and the Council reserves the right to withhold any prizes if, in the opinion of the judges, the exhibits do not possess sufficient merit.
 4. **All prize money will be paid out on the day of the show from the cash office. Prize money will be allocated as follows 1st, 2nd and 3rd prizes will all be paid in all classes. 4th 8-12, 5th 13-17, and 6th 18 plus entries.**
money WILL NOT be paid out without the prize money voucher awarded in the ring. Any uncollected prize money will be forfeited. Please note prize money will not be paid out until 1 hour after a class has ended. Any disputes must be addressed with the Light Horse Secretary and may be resolved after the show.
 5. The Society reserves the right to alter the schedule at its discretion or to merge classes if there are insufficient exhibitors. Entry fees will be refunded for any event cancelled.
 6. Any exhibitor wishing to lodge a protest in respect of any animal exhibited at the show in the Light Horse Section must do so in writing within 60 minutes of completion of the class together with a deposit of £20. This sum shall be forfeited if, on investigation by the Council, the protest is not sustained.
 7. The Council will not hold itself responsible for any loss or accident whatsoever which may occur on the showground and all entries shall be deemed to have been made on this understanding.
 8. Acknowledgement of entry forms, together with the necessary tickets, will be sent by the Secretary to enable exhibitors to check their entries have been received. If you do not receive this acknowledgement at least 7 days before the show, please contact the Light Horse Secretary.
 9. Competitors are requested to take particular note of the times of their classes and to be ready in the collecting ring.
 10. The Society reserves the right to have measured any horse or pony where there is a height stipulation and where certificates issued under the Joint Measurement Scheme cannot be produced as evidence of height. Where applicable, competitors may also be requested to produce birth certificates as proof of age.
 11. EQUINE PASSPORTS/INFLUENZA VACCINATION CERTIFICATES. Exhibitors are required to have Passports for all horses/ponies when competing at the show and up to date Equine Influenza Inoculation Certificate for each of their exhibits. Any exhibitor found without a passport or valid certificates for all their animals will be asked to leave the Showground. Please ensure you have proof of this as random checks will be made.
 12. All foals must be at least 3 weeks old. Stallions and colts 2 yrs old or over must hold a Ministry of Agriculture, Breed Society or NPS Stallion licence, unless otherwise governed by their individual breed society. All handlers of stallions and colts 2 yrs old and over must be 14 yrs old or over.
 13. **If late entries are accepted, double the entry fee will be charged, in accordance with the terms and conditions shown under the entry rules listed in this schedule**
 14. Hard hats in accordance with breed society rules must be worn at all times when mounted. In unaffiliated classes all riders must wear hats that meet current safety standards when mounted. Anyone aged 14 or under must wear protective headgear.
 15. The Society reserves the right to postpone, cancel, abandon, or curtail the Show due to 'force majeure' or otherwise at its absolute discretion. In no circumstances shall the Society be liable, in contract, tort (including negligence or breach of statutory duty) or otherwise howsoever, and whatsoever the cause thereof (i) for any loss of profit, business, contracts, revenues, or anticipated savings, or (ii) for any special indirect or consequential damage or losses of any nature whatsoever. For the purposes of this Condition, 'Force Majeure' means fire, explosion, flood, lightning, Act of God, act of terrorism, war, rebellion, riot, sabotage, or official strike or similar official labour dispute, or events or circumstances outside the reasonable control of the Society.
 16. Classes 115, 118, 139 & 140 are affiliated to The Sports Horse Breeding of Great Britain. The SHB(GB) requires all entries in these classes to be entered on their basic identity register.
 - 1 The Basic identity register is a one off lifetime register & the costs are:
 - A) Foal £28 (basic identity)
 - B) Older Horses £28 (basic identity)
 - C) Overstamp of any other society's recognised passport £30
 - 2 The only annual registration is for horses competing in a ridden qualifying class which is currently £35 for the horse and £50 for the owner & rider.
- It is strongly recommended that competitors aged 18 or over wear correctly secured Skull Caps/Riding Hats that meet one of the following current Safety Standards: All PAS 015; VG1; ASTM F1163 04a onwards; SNELL E2001; AS/NZS 3838 2003 onwards. It is mandatory for competitors under the age of 18 to wear such skull caps or hats. In the jumping phase of working hunter classes the aforementioned skull caps/riding hats must be worn.
17. Mountain and Moorland in hand ponies must be registered with their respective breed society to be eligible to compete & registration numbers must be stated on the entry form.
 18. The pony's breed society registration number must be stated when entering Heritage classes.

19. This show is affiliated to the British Show Pony Society Ref No BSPS 81/17 and all persons entering, competing, showing or otherwise taking part in the BSPS classes whether or not members of the BSPS are subject to the constitution and rules of the BSPS including the disciplinary procedures and shall be deemed to have consented to the jurisdiction of the BSPS.

This show is a qualifier for the BSPS Championship Show 2017. CHALLENGE – New rule 516 (Please see BSPS 2017 Rule and Show Handbook)

This is a qualifying show for the "BSPS Premier League", the 1st, 2nd, 3rd & 4th placed ponies in the Heritage Lead Rein, First Ridden and Heritage Ridden classes will qualify.

This show is a qualifier for the BSPS "Classic Security (UK) Ltd" challenge. The higher placed pony in the Heritage classes that has not qualified for the 2017 Horse of the Year Show, in the appropriate Horse of the Year Show class, will qualify. If the highest placed pony has already qualified the qualification will be awarded to the next eligible pony.

This show is a qualifier for the BSPS Best Rider of the Year. The Best Rider in the Heritage classes where the rider has not attained their 25th birthday will be awarded a best rider card and will qualify for the final at the BSPS Summer Championships Show.

20. Classes 101-104, 125-130, 133, 141-142 are held under the rules of the British Show Horse Association. Horses must be registered with the Association and all Owners, Producers and Riders must be Association Members. Riders must be 15 years of age or older. Registration numbers must be quoted on the entry form.

Horses competing at the Horse of the Year Show and qualifying shows in The Hunter sections of The Sport Horse Breeding of Great Britain classes at their Affiliated Shows cannot compete in Hack, Cobs and Riding Horse classes at the same show, on the same day and vice versa. This does not apply to SHB (GB) Ridden Sport Horse classes.

The three highest placed prize winners in all **Open** Affiliated classes will qualify to compete in the BSHA Classic Supreme classes at the National Championship Show 2017. With the exception of Hoys Hunter qualifiers.

Day Tickets - Non-Members may purchase a Day Ticket for classes 127, 128 & 133. They can have up to a maximum of 2 Day Tickets per Exhibitor, per Horse, per Rider, per season. A Day Ticket will

allow entry into Amateur, Home Produced, In-Hand, Novice, Working, Young Rider and Open Affiliated classes only, **but will NOT allow entry into RIHS or HOYS qualifying classes.** Horses registered on a Day Ticket do not require a JMB height certificate. Competitors can apply for a Day Ticket by downloading an application form from the BSHA website.

The BSHA offer a Novice, Amateur and Young Rider Rosette in each Open class and a champion rosette for each section (with the exception HOYS Hunter classes). The Association will award an Amateur Home Produced rosette in all Affiliated **Open** cob classes (with the exception of HOYS Hunter classes); the Cob rosettes have been kindly sponsored by TSG, Mr L Turley and the Maxi Cob rosettes have been kindly sponsored by Mr & Mrs E McCourt. The awards will go down the line; there is no limit on how many of these rosettes can be claimed in a year. Please state on your entry form if you are eligible for these.

21. The Horse of the Year Show Ridden Hunter and Working Hunter Classes, 101-104 and 141-142 are affiliated to The British Show Horse Association. Owners, Producers and riders must be members of the BSHA and all horses must be registered with the BSHA. Registration numbers must be quoted on entry form. Competitors must enter their horses in the appropriate weight section, but the judges shall have the power to transfer exhibits to a different section if they deem it necessary. Any horse which has qualified as a Grade A Showjumper or Advanced Event horse as at the 1st January in the current year is not eligible to compete in working hunter classes.

22. This show is a Qualifier for the Blue Chip & Irish Draught Horse Society (GB) £2,000 Challenge. The highest placed horse (not already qualified) from each of the following classes:

Ridden Hunters

Working Hunters (inc novice, restricted and unaffiliated)

Novice Riding Horse

Cobs (including novice and amateur)

Ridden Irish Draught & Ridden Irish Draught Sport Horse

will qualify for the Final of the Blue Chip & IDHS (GB) £2,000 Challenge which will be held at the IDHS (GB) Annual Breed Show in 2018. **N.B: A horse may only qualify for the Final once, regardless of the type or number of classes won, placed in or entered.** Each qualifier will receive a card and a £10 voucher from Blue Chip. **Qualifiers are required to complete an online form at www.idhsgb.com to inform the IDHS (GB) that they have qualified for the Final.** In the Final, the Champion will be awarded £1,000 prize money, a trophy and a Blue Chip rug. The Reserve Champion will be awarded £500 and 3rd to 7th inclusive will be awarded £100 each. In addition, the highest placed Pure Bred Irish Draught will receive a trophy, the highest placed Sport Horse will receive a trophy and £50 and £100, the highest placed 158cm (15.2hh) and under will receive a trophy and £50, and the highest placed Amateur Produced and Ridden Horse will receive a silver salver and a rug

23. Classes 123-124 are affiliated to Senior Showing & Dressage Limited (SSADL). The Olympia Anthony Evans SSADL First Round Qualifiers are open to both members and non members of SSADL. SSAD Ltd rulebook can be found at www.seniorshowinganddressage.co.uk. No spurs, no galloping, no wearing of face/body jewellery. Foals are not permitted in SSADL in hand classes. Minimum age of handler is 9 years. Handlers/riders of stallions must be over the age of 16 years. Rider/handler/pony/horse combinations must stay the same from the first/second round qualifiers to the grand final. Prize cards will be awarded 1st to 6th in each class and will be handed out in the ring at the time of presentation. Competitors only need one qualification card per section per season for in hand classes and/or ridden classes. If already qualified, the card will be handed down the line. Classes 108 – 111, 120, 122-124, 127-128, 136-137, 138 & 148 are qualifiers for the SSADL Championship Show, 9th & 10th September 2017 held at Onley Equestrian Grounds, Warwickshire.

24. Any competitor or animal on the showground deemed to be rude, dangerous, out of control or being mistreated can be approached and dealt with by any official of the Ashbourne Show.

The highest placed home produced senior pony/horse, 15 years and over will qualify. Qualification cards will be handed out at time of classes.

25. Classes 116-117 are affiliated to the Irish Draught Horse Society (GB) and only horses registered with the IDHS (GB) and in the correct ownership are eligible for entry. All exhibits must be registered on either the Irish Draught Registers OR Irish Draught Sport Horse Registers. Registration numbers to be stated on the entry form and entries will be sent to the IDHS (GB) prior to the Show to confirm eligibility. All competing STALLIONS must be graded with the IDHS (GB) and classified as RID (GB), ID Class 1 or ID Class 2 OR Grade 1 Irish Draught Sport Horse and must display a red, white and blue ribbon in their tails. In the interest of safety, all riders of STALLIONS must be 18 years of age or over and stallion shown 'in hand' must be bitted and shown by an experienced handler of 18 years of age or over. All ridden horses must be 153cm (15hh) or over.

26. Class 134-145 is run under the rules of the RoR and all those entering horses and/or participating in the show agree to be bound by the Retraining of Racehorses Rules and Regulations from time to time in force. Horses should be ridden in a snaffle, pelham or simple double bridle. Horses should be plaited. All entries **MUST** be registered with the RoR and include their registration number on the entry form and have **RACED in GB**. All those entering horses and/or participating in the show agree to be bound by the RoR Rules and Regulations from time to time in force. Please be aware that the show will split the class on the horse's last run in a race (NH or Flat) or will provide 2 ride judges should the entries exceed 20. Please mark your entry form accordingly. **Competitors must wear a safety/kite mark hard hat with a chinstrap. Racing injuries and blemishes will NOT be ignored in this series**

27. In the Private Driving classes, all horses and ponies to be 4yrs old and over. **Young Driver** – The driver must be aged 10 years or over on the first day of the show at which they are to compete. A driver under the age of 18 must be accompanied in the vehicle by a competent and responsible person aged 18 years or over, a "responsible adult". Proof of age will be required if necessary. It is the responsibility of the owner/driver (if over 18) or (if the owner/driver is under 18) the responsible adult to ensure that his/her groom/s is/are competent for the purpose of attending to the turnout and aged 10 or over on the day of the show. When in the vehicle grooms, passenger/s and driver must have their feet firmly on the floor of the vehicle or use a suitable fixed footrest. The regulations apply at all times and in all areas of the showground. **Hard Hat Ruling** – All drivers/grooms/passengers under the age of 14 years must wear a correctly fitted hard hat when in a carriage or in attendance at a turnout.

C·W·SELLORS

Fine Jewellery

Proud sponsors of
Ashbourne Show

C W Sellors, 2 Victoria Square,
Ashbourne, Derbyshire DE6 1GG

Tel: 01335 342 002
Email: ashbourne@cwsellors.com

www.cwsellors.com
www.cwsellorswatches.co.uk

*Gemstone Jewellery • Diamonds • Watches
Wedding Rings • Charms & Gifts • Repairs
Unwanted Jewellery Purchased*



WINNERS
MOST INNOVATIVE USE
OF GEMSTONES
2010 • 2008 • 2007

IJL INTERNATIONAL
JEWELLERY
LONDON
& The Gemmological Association
of Great Britain