



Ashbourne Show

Light Horse Schedule

Horse of the Year Show:
Private Driving

London International Horse Show Qualifiers:
Side Saddle, Ridden Hunters, Working Hunters, Riding Horses,
Hacks, Cobs, Racehorse to Show Horse, Style & Performance,
Performance Pony, Coloured Horse or Pony, Heritage Lead Rein &
First Ridden Working Sports Pony, Cradle & Nursey Stakes.

RESS Classes:
Ridden & In hand

Unaffiliated Classes:
Ridden, In hand & Working Hunters Horse & Pony Classes.

**The Polo Ground,
Osmaston, Nr Ashbourne.
Saturday 16th August 2025**

Light Horse Entries Secretary - Cheryl Scott

Tel: 07966 625994

Website: www.ashbourneshow.co.uk

Livestock schedules available on the website
Organised by Ashbourne Shire Horse Society



horse of the year show

SAVE THE DATE

8TH - 12TH OCTOBER 2025

HOYS.CO.UK



TIMETABLE (these are Not Before times)

Main Ring 1

8 am	Class 501	BSHA LIHS Rising Star Ladies Side Saddle Style & Performance
Follow on	Classes 502-503	BSHA LIHS Rising Star Hunters
11 am	Classes 504-506	Horse of the Year & BDS Driving Classes

Ring 2

8 am	Class 507	Unaffiliated Working Hunter Ponies
9 am	Classes 508-509	BSPS LIHS Heritage Lead Rein & First Ridden Working Sports Pony
Follow on	Class 510-511	BSPS LIHS Cradle & Nursery Stakes
1 pm	Classes 512	Unaffiliated Working Hunter Horses
2 pm	Class 513-514	BSHA LIHS Rising Star Working Hunter Type & Show Horse

Thorswood Equine Transport Ring 3

8 am	Classes 515	BSHA LIHS Racehorse to Show Horse
Follow on	Class 516-517	BSHA LIHS Rising Star Hacks/Riding Horses
11.30 pm	Classes 518-519	BSHA LIHS Cobs
2pm	Classes 520-521	BSPS LIHS Coloured Horse or Pony

Little Rocks Equine Ring 4

8 am	Classes 522-524	BSPS LIHS Performance Ponies
11 pm	Classes 525-526	BSHA Rising Star Style & Performance
1pm	Classes 527-529	In Hand Classes
2pm	Classes 530-532	RESS Inhand & Ridden
To Follow	Classes 533-538	Ridden Classes

All the above times are approximate times only.
Classes **will not** start before the times shown.

Course builder: Mr. D Norlander

MEMBERSHIP OF THE ASHBOURNE SHIRE HORSE SOCIETY

The Ashbourne Shire Horse Society would be pleased to welcome new members to the Society upon payment of the annual subscription. Membership entitles you to entrance for 1 member, 1 guest and two children under the age of 15, entry to the members' enclosure, restaurant, bar and grandstand.

ENTRY RULES

ONLINE ENTRIES: www.ashbourneshow.co.uk

On-line entries close 1st August 2025

Paper Entries close 21st July 2025

There is a £2 admin charge on postal entries, cheques will not be accepted, Bank transfers only.

Entries received by these dates will be charged at the published rate.

Late Entries received between 2nd and 8th August 2025 will incur a late entry charge.

NO ENTRIES WILL BE ACCEPTED AFTER 8TH AUGUST 2025

Entry Fees **INCLUDE** first aid & prize money

London International Horse Show Qualifiers - £30 (Inc Levy). Prize Money 1st - £30, 2nd £15, 3rd £10

Horse of the Year Qualifier - £60 (Inc £18 Levy). Prize Money: 1st - £40, 2nd £35, 3rd £30, 4th £25

Unaffiliated & RESS Classes - £18. Prize Money: 1st - £12, 2nd £8, 3rd £5

Clear Round Working Hunters Horses & Ponies - £10

PLEASE NOTE: IF ENTERING HORSE OF THE YEAR SHOW QUALIFYING CLASSES YOU **MUST** BE REGISTERED ONLINE VIA WWW.GRANDSTANDENTRIES.COM BEFORE ENTERING ASHBOURNE SHOW.

Entries can also be taken on the day for any unaffiliated class from any competitor **already** entered in other classes. These classes will be charged at £22 per class. Clear round £10 cash only.

WRISTBAND AND VEHICLE PASS ALLOCATION

Exhibitors' entrance wristbands and vehicle passes will be sent out prior to the show and are allocated as follows:

1 Animal: 2 Wristbands + 1 Vehicle Pass

2-3 Animals: 3 Wristbands + 1 Vehicle Pass

4-5 Animals: 4 Wristbands + 1 Vehicle Pass

Please note that no admittance will be granted to the showground if you are not wearing the supplied wristband. In case of an emergency only exhibitors wearing light horse wrist bands will be given access to the lorry park.

Additional admission wristbands for friends and supporters can be purchased at a reduced rate **ONLY** if purchased at the time of entry.

Headgear

A correctly secured skull cap/riding hat, of a current safety standard, must be worn by all persons when mounted, anywhere on the Showground. All skull caps/riding hats should have a three-point harness, and this must be correctly fastened at all times. In the ring, all skull caps must be worn with a plain dark coloured peaked cover.

All exhibitors are reminded that they compete at their own risk and they should have public liability insurance.

Equine Flu & Tetanus Vaccinations

Equine Influenza and Tetanus vaccinations are a compulsory requirement for all horses attending the Ashbourne Show.

The requirement for the first 3 vaccinations is as follows: -

The first 2 vaccinations 21 – 92 days apart, a third booster between 150-215 days, and an annual booster vaccination within 6 months of the show.

No horse should enter competitions within 7 days of an EI vaccination.

Foals should commence vaccinations at 6 months old.

This rule may be subject to change from guidance from the FEI/BEF and any changes will be notified via the Showing Council and ASAO website

The official photographer for Ashbourne Show is Amy Griffiths Photography, the images will be available to purchase on the day as well as online at www.amygriffithsphotography.co.uk

There will be an onsite Farrier available on the day from
7.30am until 2pm
Chris Hole - 07976 485409

This show is a qualifier for the N.C.P.A. Pony of the Year Show in September 2025. First and second prize winners in appropriate classes will qualify.

Welfare Stewards will be onsite throughout the Show. They are here to support and guide our exhibitors whilst promoting good horsemanship and protecting the welfare of equines at the Show. Please approach them if you have any concerns.

London International Horse Show Qualifiers

To be judged in the Main Ring 1 at 8.00am

Judge: Ms S Stockley-Bridges

Open to members and pre-registered non-members, 15 yrs and over, eligible under Rising Star Amateur rules.

Please note: Rising Star Amateur Rules 2025 are separate from BSHA Amateur rules. Please see the separate Rising Star Rulebook in the Rising Star section available on the BSHA website. <https://britishshowhorse.org/bsha-rising-stars-series/>

If you are in any doubt regarding your Rising Star Amateur status, please contact the BSHA Office directly, to have your status confirmed.

LIHS 18th – 22nd December 2025

Classes 501-503 qualify for LIHS BSHA Rising Star Supreme Finals at the London International Horse Show, highest placed unqualified in top five to qualify.

A results points table will run for all qualifying classes and a 'wild card' will be awarded to those unqualified with the highest points in each section following the final qualifier.

Class 501: BSHA LIHS Rising Star Ladies Side Saddle Style & Performance

Mare or gelding, 4 years old or over, exceeding 148cm, to carry a side saddle and to be ridden by a lady. Open to ALL types and to be judged on performance. Rider to be 15yrs or over. There will be no conformation marks awarded in the class (exhibits will not be stripped). The highest placed unqualified horse in the top 5 will qualify for the LIHS BSHA Rising Star Side Saddle Style Performance Supreme Final at the LIHS in December. **QUALIFICATION WILL BE CONFIRMED BY EMAIL ONCE BSHA MEMBERSHIP IS COMPLETED WITHIN 14 DAYS OF QUALIFICATION.** In addition, the two highest placed unqualified horses will qualify for the Associate Rising Star Style & Performance final at the BSHA National Championships Show in September. Associate Rising Star Qualification Cards will be awarded in the ring.

Exhibitors will ride together as a class, which will be considered as part of the collective marks.

Exhibitors will then be asked to perform a freestyle show/display (max 2.5 mins), which will be marked, to include, (but not restricted to), in any order:

- on both reins, walk, trot, canter.
- halt in the middle of the show/display for 4 secs before proceeding.
- a canter change of rein across the diagonal through trot or walk (5 strides max).
- lengthened canter strides.
- free walk on a long rein.

Marks:

Performance (not to exceed 2.5 minutes) 70 Marks

Please see above for full requirements

Collective marks

Overall Impression 15 marks

(incl. Horsemanship, Harmony, Rider Position)

Manners & way of going for type 15 marks

TOTAL 100 marks

Style & Performance series classes dress rules – please refer to dress rules in the Rising Star Rulebook, the same dress rules apply to both the 'Type' classes and Style & Performance classes.

Class 502: BSHA LIHS Rising Star Ridden Hunter – Small/Lightweight Hunter type

Mare or gelding, 4 years old or over, (Lightweight exceeding 158cms, Small Hunter exceeding 148cms, but not exceeding 158cms). Capable of carrying up to 79.5kgs (12 stone 7lbs). Rider to be 15yrs or over. The highest placed unqualified horse in the top 5 will qualify for the LIHS BSHA Rising Star Small/Lightweight Hunter Supreme Final at the LIHS in December. QUALIFICATION WILL BE CONFIRMED BY EMAIL ONCE BSHA MEMBERSHIP IS COMPLETED WITHIN 14 DAYS OF QUALIFICATION.

In addition, the two highest placed unqualified horses will qualify for the Associate Rising Star Hunter final at the BSHA National Championships Show in September. Associate Rising Star Qualification Cards will be awarded in the ring.

Class 503: BSHA Rising Star Ridden Hunter - Middleweight/Heavyweight Hunter type

Mare or gelding, 4 years old or over, exceeding 158cms. Capable of carrying over 89kgs (14 stone). Rider to be 15yrs or over. The highest placed unqualified horse in the top 5 will qualify for the LIHS BSHA Rising Star Middleweight/Heavyweight Hunter Supreme Final at the LIHS in December. QUALIFICATION WILL BE CONFIRMED BY EMAIL ONCE BSHA MEMBERSHIP IS COMPLETED WITHIN 14 DAYS OF QUALIFICATION.

In addition, the two highest placed unqualified horses will qualify for the Associate Rising Star Hunter final at the BSHA National Championships Show in September. Associate Rising Star Qualification Cards will be awarded in the ring.

Ridden Hunter Championship

1st & 2nd prize-winners from the ridden hunter classes 502 & 503 to compete for **The Cottage Garden Cosmetics Perpetual Challenge Trophy**.

The Ronnie Marmont Stanning Trophy - To be judged in the main ring and will be awarded to the exhibit which presents the most pleasing image of horse and rider, combining distinguished and elegant appearance, suitability and fitness of purpose with stylish performance. Two exhibits from each of the ridden hunter classes will be selected during the judging of their classes to compete for this championship.

A prize of £10 will be awarded to the highest placed entry in the ridden hunter classes, owned & ridden by an exhibitor residing within a radius of 25 miles of the show ground. All eligible entries must wear a white armband.

Private Driving Classes

To be judged in the Main Ring 1 not before 11.00 am

Judge: Mrs R Bown

Class 504: Exercise Vehicles

Open to horses and ponies, 4 years old and over. A single, pair or tandem driven to a carriage of non-traditional type design and includes those with pneumatic tyres specifically designed for carriages (i.e. Not car tyres). Judging will include general cleanliness, correct fitting of harness and vehicle suitability. Young Drivers, the driver must be aged 8 years or over on the first day of the show at which they are to compete. A driver under the age of 18 must be accompanied in the vehicle by a competent and responsible person aged 18 years or over, a "responsible adult". Proof of age will be required if necessary. It is the responsibility of the owner/driver (if over 18) or (if the owner/driver is under 18) the responsible adult to ensure that his/her groom/s is/are competent for the purpose of attending to the turnout and aged 8 or over on the day of the show. All drivers/grooms/passengers under the age of 14 **must** wear a hard hat. We recommend a correctly secured skull cap/riding hat that meets one of the current BSI standards should be worn when in a carriage or in attendance to the turnout.

Horse of the Year Show Qualifier: Private Driving

To be judged in the Main Ring 1 to follow exercise vehicle class

Class 505: Private Driving 13.2hh & under Ponies 13.2hh & under, 4 years and over. Open to a single, pair or tandem. Driven to a traditional type vehicle, traditional profile and identifiable type to resemble the design of a carriage built prior to the First World War. The vehicle may be made from modern materials but must have traditional style springing and carriage lamps. Pneumatic tyre vehicles, trade turnouts and show wagons are not eligible.

Class 506: Private Driving over 13.2hh Horses & ponies over 13.2hh, 4 years and over. Open to a single, pair or tandem. Driven to a traditional type vehicle, traditional profile and identifiable type to resemble the design of a carriage built prior to the First World War. The vehicle may be made from modern materials but must have traditional style springing and carriage lamps. Pneumatic tyre vehicles, trade turnouts and show wagons are not eligible.

Horse of the Year Private Driving Championship

1st, 2nd & 3rd prize winners from classes 505 & 506

British Driving Society also offer a Champion, Reserve & Best Young Driver Rosettes

The Wallmyers Sue Williams Trophy will be awarded to the champion

Qualification for the Harness Horse & Pony of the Year Championship at The Horse of the Year Show, 8th – 12th October 2025, National Exhibition Centre, Birmingham, will be awarded to the highest placed turnout in the Private Driving Championship down to 6th place, disregarding those already qualified. The qualifying turnout must be owned and driven by a member of the British Driving Society.

Qualifying for the BDS Iceline Yorkshire Ltd National Championships:

The highest place turnout in the designated type-section in each qualifying class, disregarding those already qualified down to 6th place in the class, will qualify for the 2025 National Driving Championship Semi-Finals at Addington Equestrian Centre on the 20th September as follows:

Type sections (a) – (g) will qualify for the Private Driving Semi-Finals

Type sections (h) – (i) will qualify for the Light Trade Semi-Finals

Type sections (j) – (k) will qualify for the Exercise Vehicle Semi-Finals

Type sections (l) – (m) will qualify for the Young Driver Semi-Finals

In the event of a show staging a qualifying class that includes a drive in the judging of the class, the drive must be completed for qualification to be awarded. The Judge of the qualifying competition has the right to withhold an award in the qualifier. Turnouts must qualify between the 1st April 2025 and the 2nd of September 2025 to be eligible for the 2025 Semi-Final. Exhibitors who qualify for the Semi-Final must apply for an entry form from the BDS and make an entry on that form, to arrive before the specified closing date of entries.

For the full rules for the Championship Show please refer to the BDS Yearbook / BDS Website.

Ring 2

Unaffiliated Working Hunter

Start time - 8am

Clear Round Working Hunters - £10

Class 507: Clear Round Working Hunter Ponies – Open to ponies up to 148cm or Registered M & M ponies, riders any age but must be suitably mounted. Clear rounds will receive a rosette.

London International Horse Show Qualifiers

Not Before 9am

Judge: Mrs E Leedham

Class 508: BSPS LIHS Heritage Lead Rein Working Sports Pony, Mare or Gelding, 4yrs old and over, Mountain and Moorland registered ponies and non-registered Mountain and Moorland type ponies not exceeding 128cms. Ridden by a child to have attained their 5th birthday on the 1st January in the current year and not to attain their 10th birthday by 1st January in the current year. Any suitable snaffle bridle.

In Lead Rein WSP classes the Judges will be looking for a pony suitable for a child to begin their future in Working Sports Pony classes.

Marks:

Manners & Style whilst performing the test

(including go round and jumping)

60 Marks

Type, Movement & Freedom of Action

20 Marks

Presentation, condition & suitability of pony for the rider

20 Marks

TOTAL

100 MARKS

Criteria

The Leader must be 16 years old or over and may only lead one pony in a class.

The rein **MUST** go directly from the bit to the rider's hand, with no extra aids or attachments to or on the saddle.

Handles on saddles are permitted but the reins must not be attached to the handle or to the saddle. The Lead Rein must be affixed to the noseband on which it must remain while the pony is in the ring.

Whilst in the ring ponies must always be led by the leader.

The Leader must lead on the near side with the lead rein in the left hand.

RIDERS - Hats in accordance with BSPS Rules, Tweed Jackets, Beige or cream jodhpurs, Shirt, tie, boots and gloves.

No Buttonholes

LEADERS Country attire, Gentlemen Trilby Hats or Caps, Ladies modest hats.

Method of Judging

Ponies will enter the ring at the walk, they may be trotted altogether at the Judges' discretion.

They will be pulled into line and asked to perform an individual test around obstacles including jumping a maximum of three small upright fences not exceeding 30cms. No spread fences.

Water will not be included. Ponies will not be asked to walk on artificial material e.g. plastic sheeting during the test. *Riders will not be asked to dismount.*

Judges will penalise refusals, knockdowns or taking the wrong course at their discretion.

A stride or two of canter over the fences will not be penalised.

There will be **NO** conformation marks. **Ponies must be shown unplaited and in accordance with their breed standards.**

Judge: Mrs C Collier

Class 509: BSPS LIHS Heritage First Ridden Working Sports Pony

Mare or Gelding, 4 years old and over, for registered Mountain and Moorland ponies and non-registered Mountain and Moorland type ponies not exceeding 128 cm. Ridden by a child to have attained their 6th birthday on the 1st January in the current year and not to have attained their 12th birthday by 1st January in the current year. Any suitable snaffle bridle. Ponies to be shown unplaited.

In First Ridden WSP classes the Judges will be looking for a pony suitable for a child to begin their future in Working Sports Pony classes.

Marks:

Manners & Style whilst performing the test (including go round and jumping)	60 Marks
Type, Movement and Freedom of Action	20 Marks
Presentation, condition and suitability of pony for the rider	20 Marks
TOTAL	100 MARKS

Criteria

Martingales are permitted

RIDERS - Hats in accordance with BSPS Rules, Tweed Jackets, Beige or cream jodhpurs, Shirt, tie, boots and gloves.

Body protectors are compulsory in this class.

No Buttonholes

Method of Judging

Ponies will enter the ring at the walk, and then trotted altogether at the Judges' discretion. They will be pulled into line in any order and asked to perform an individual test around obstacles including jumping a maximum of three small upright fences not exceeding 30cms. At the end of the test, they will canter down one side of the arena to finish. No spread fences. Water will not be included. Ponies will not be asked to walk on artificial material e.g. plastic sheeting during the test. *Riders will not be asked to dismount.* Judges will penalise refusals, knockdowns or taking the wrong course. Canter over the fences will not be penalised. There will be NO conformation marks.

Judge: Mrs E Leedham

Class 510: BSPS LIHS Open Cradle Stakes Class LIHS Mare or Gelding, 4 years old and over, not exceeding 123cms. Suitable to be ridden by a rider not to have attained their 11th birthday before 1st January in the current year.

Judge: Mrs C Collier

Class 511: BSPS LIHS Open Nursery Stakes:

Mare or Gelding, 4 years old and over, not exceeding 133cms. Suitable to be ridden by a rider not to have attained their 13th birthday before 1st January in the current year.

Marking

PHASE ONE

Jumping	50
Style & Manners while Jumping	20

PHASE TWO

Manners and way of going	10
Conformation, Type & Freedom of Action	20
TOTAL	100

PENALTIES - PHASE ONE

Jumping Knock Down	10
First Refusal	15
Second Refusal	20
Third Refusal	Disqualification
Fall of pony or rider in any phase	Disqualification

Method of Judging

This is a judged over a course of WHP fences individually with a separate conformation section and then all ponies come together for the final result.

CHAMPIONSHIP - The 1st and 2nd prize winners from classes 508 To 511 to compete

Clear Round Working Hunters - £10

Not Before 1pm

Class 512: Clear Round Working Hunter – Open to horses, riders any age but must be suitably mounted. Clear rounds will receive a rosette.

London International Horse Show Qualifiers

Not Before 2pm

Judge: Miss S Ramsden

Open to members and pre-registered non-members, 15 yrs and over, eligible under Rising Star Amateur rules.

Please note: Rising Star Amateur Rules 2025 are separate from BSHA Amateur rules. Please see the separate Rising Star Rulebook in the Rising Star section available on the BSHA website. <https://britishshowhorse.org/bsha-rising-stars-series/>

If you are in any doubt regarding your Rising Star Amateur status, please contact the BSHA Office directly, to have your status confirmed.

LIHS 18th – 22nd December 2025

Classes 513 to 519 qualify for LIHS BSHA Rising Star Supreme Finals at the London International Horse Show, highest placed unqualified in top five to qualify.

A results points table will run for all qualifying classes and a 'wild card' will be awarded to those unqualified with the highest points in each section following the final qualifier.

Class 513 BSHA Rising Star of Working Hunter Type:

Open ONLY to Hunters, mare or gelding, 4 years old and over exceeding 148cm (14.2hh approx.) Any horse which is registered / previously registered as a Grade A showjumper, Advanced Eventer, or above as at 1st January of the current year, is not eligible. Rider to be 15yrs or over.

Height of fences: minimum 3'0", maximum 3'3", maximum spread 3'3". Please note the height of the fences may be raised at the final at the discretion of the Course builder/ BSHA Representative.

A Rider may ride up to two Horses in the jumping phase only and then must select one Horse to take through to the Individual Show & Conformation stage. No change of Rider is allowed. (2025)

The highest placed unqualified horse in the top 5 will qualify for the LIHS BSHA Rising Star Working Hunter Type Supreme Final at the LIHS in December
QUALIFICATION WILL BE CONFIRMED BY EMAIL ONCE BSHA MEMBERSHIP IS COMPLETED WITHIN 14 DAYS OF QUALIFICATION

Class 514: BSHA LIHS Rising Star Working Show Horse:

Open ONLY to Hacks, Cobs, Maxi Cobs and Riding Horses, mare or gelding, 4 years old and over, exceeding 148cms. Any horse which is Grade B showjumper, Intermediate Eventer, or above as at 1st January of the current year, is not eligible. Rider to be 15yrs or over.

The Height of fences: minimum 2'6", maximum 2'9", maximum spread 2'9". Please note the height of the fences may be raised at the final at the discretion of the Course builder/ BSHA Representative.

A Rider may ride up to two Horses in the jumping phase only and then must select one Horse to take through to the Individual Show & Conformation stage. No change of Rider is allowed. (2025)

The highest placed unqualified horse in the top 5 will qualify for the LIHS BSHA Rising Star Working Show Horse Supreme Final at the LIHS in December. QUALIFICATION WILL BE CONFIRMED BY EMAIL ONCE BSHA MEMBERSHIP IS COMPLETED WITHIN 14 DAYS OF QUALIFICATION

CHAMPIONSHIP - The 1st and 2nd prize winners from classes 513 To 514 to compete

Thorswood Equine Transport Ring 3**London International Horse Show Qualifiers**

Start time 8am

Judge: Ms J Wormal

Class 515: BSHA LIHS Rising Star Racehorse to Show Horse:

Mare or gelding, 4 years old or over, exceeding 148cm. Open to thoroughbred horses or Arab horses retired from race training. Rider to be 15yrs or over.

The highest placed unqualified horse in the top 5 will qualify for the LIHS BSHA Rising Star Racehorse to Show Horse Final at the LIHS in December. This class is open to competitors who work within the racing industry. QUALIFICATION WILL BE CONFIRMED BY EMAIL ONCE BSHA MEMBERSHIP IS COMPLETED WITHIN 14 DAYS OF QUALIFICATION

In addition, the two highest placed unqualified horses will qualify for the Associate Rising Star Associate Racehorse to Show Horse final at the BSHA National Championships Show in September. Associate Rising Star Qualification Cards will be awarded in the ring.

Judge: Mr. M Maher-Burns

Class 516: BSHA LIHS Rising Star Small Hack/Riding Horse:

Horses are only eligible to qualify for the small or large section, not both, please only enter either the small or large section.

Small Hack/ Riding Horse type: Mare or gelding, 4 years old and over, exceeding 148cm. Hacks not to exceed 154cm and Riding Horses not to exceed 158cm. Rider to be 15yrs or over.

The highest placed unqualified horse in the top 5 will qualify for the LIHS BSHA Rising Star Supreme Small Hack/Riding Horse Supreme Final at the LIHS in December. QUALIFICATION WILL BE CONFIRMED BY EMAIL ONCE BSHA MEMBERSHIP IS COMPLETED WITHIN 14 DAYS OF QUALIFICATION. In addition, the two highest placed unqualified horses will qualify for the Associate Rising Star Hack/Riding Horse final at the BSHA National Championships Show in September. Associate Rising Star Qualification Cards will be awarded in the ring.

Class 517: BSHA LIHS Rising Star Large Hack/Riding Horse:

Mare or gelding, 4 years old and over. Hacks to exceed 154cm but not exceeding 160cm. Riding Horses to exceed 158cm. Rider to be 15yrs or over.

The highest placed unqualified horse in the top 5 will qualify for the LIHS BSHA Rising Star Large Hack/Riding Horse Supreme Final at the LIHS in December. QUALIFICATION WILL BE CONFIRMED BY EMAIL ONCE BSHA MEMBERSHIP IS COMPLETED WITHIN 14 DAYS OF QUALIFICATION.

In addition, the two highest placed unqualified horses will qualify for the Associate Rising Star Hack/Riding Horse final at the BSHA National Championships Show in September. Associate Rising Star Qualification Cards will be awarded in the ring.

CHAMPIONSHIP - The 1st and 2nd prize winners from classes 515 To 517 to compete

Not Before 11.30am

Judge: Ms J Wormal

Class 518: BSHA LIHS Rising Star Cob:

Lightweight & Heavyweight Cob type: Mare or gelding, 4 years old and over, exceeding 148cm, but not exceeding 155cm. Rider to be 15yrs or over.

The highest placed unqualified horse in the top 5 will qualify for the LIHS BSHA Rising Star Cob Supreme Final at the LIHS in December. QUALIFICATION WILL BE CONFIRMED BY EMAIL ONCE BSHA MEMBERSHIP IS COMPLETED WITHIN 14 DAYS OF QUALIFICATION

In addition, the two highest placed unqualified horses will qualify for the Associate Rising Star Cob final at the BSHA National Championships Show in September. Associate Rising Star Qualification Cards will be awarded in the ring.

Class 519: BSHA LIHS Rising Star Maxi Cob type:

Mare or gelding, 4 years old and over, exceeding 155cms - to be judged as Cobs. Rider to be 15yrs or over. Judges must pay particular attention to type (i.e. short legged animals of COB type). To be shown hogged.

The highest placed unqualified horse in the top 5 will qualify for the LIHS BSHA Rising Star Maxi Cob Supreme Final at the LIHS in December. QUALIFICATION WILL BE CONFIRMED BY EMAIL ONCE BSHA MEMBERSHIP IS COMPLETED WITHIN 14 DAYS OF QUALIFICATION

In addition, the two highest placed unqualified horses will qualify for the Associate Rising Star Cob final at the BSHA National Championships Show in September. Associate Rising Star Qualification Cards will be awarded in the ring.

CHAMPIONSHIP - The 1st and 2nd prize winners from classes 518 To 519 to compete

Not Before 2pm

Judge: Mrs D Christie

Class 520: BSHS LIHS Performance Coloured Native/Cob/Traditional Horse/Pony:

Stallion, Mare or Gelding, 4 years old and over. Riders any age. Unplaited.

Class 521: BSHS LIHS Performance Coloured Non-Native Horse/Pony Class:

Stallion, Mare or Gelding, 4 years old and over. Riders any age. Plaited.

Marks and method of judging for all performance classes

Marks:

Performance	70 Marks
Manners and way of going	10 Marks
Presentation, suitability and condition	10 Marks
Type and freedom of action	10 Marks

TOTAL 100 Marks

Method of judging for

Exhibitors enter the ring as a whole class on the right rein. (Classes may be split on the go round dependent on numbers at the judge's discretion). Exhibitors will walk, trot and canter, including change of rein and canter on the left rein before coming back to walk. No galloping on the go round. In the 128cm Performance Pony Class, NO CANTERING on the go round. NO PULL IN. In the event of a tie performance marks take precedence.

Exhibitors will perform an individual display, this must include a walk, trot and canter on both reins, a free walk on a long rein, canter circle, extension at canter (not a gallop) on one rein, and a halt. Canter transitions must be executed on the straight, (not at a corner) No stripping, exhibitors will be asked to walk away and trot back to the judge before commencing their display. Any suitable bridle, including a Micklem bridle, flash or grackle, nosebands etc., and a correctly fitted running martingale can be used. Coloured or plain brow bands can be used. Bit-less bridles and Running Gags are not permitted.

CHAMPIONSHIP - The 1st and 2nd prize winners from classes 520 To 521 to compete

Little Rocks Equine Ring 4

London International Horse Show Qualifiers

Classes start at 8 am

Judge: Mrs H Turnock

Class 522: BSPS LIHS Junior Performance Pony

Mare or Gelding, 4 years old or over not exceeding 128 cm Plaited ponies. Riders not to have attained their 12th birthday on the 1st January in the current year. Any suitable bridle, no cantering except in individual show.

Class 523: BSPS LIHS Performance Pony

Mare or Gelding 4 years old and over, not exceeding 148cm Plaited ponies. Riders not to have attained their 17th birthday on 1st January in the current year.

Class 524: BSPS LIHS Performance Pony

Stallion, Mare or Gelding 4 years old and over, not exceeding 158cm. Plaited ponies/horses. Riders any age.

Marks and method of judging for all performance classes

Marks:

Performance	70 Marks
Manners and way of going	10 Marks
Presentation, suitability and condition	10 Marks
Type and freedom of action	10 Marks
TOTAL	100 Marks

Method of judging for

Exhibitors enter the ring as a whole class on the right rein. (Classes may be split on the go round dependent on numbers at the judge's discretion). Exhibitors will walk, trot and canter, including change of rein and canter on the left rein before coming back to walk. No galloping on the go round. In the 128cm Performance Pony Class, NO CANTERING on the go round. NO PULL IN. In the event of a tie performance marks take precedence.

Exhibitors will perform an individual display, this must include a walk, trot and canter on both reins, a free walk on a long rein, canter circle, extension at canter (not a gallop) on one rein, and a halt. Canter transitions must be executed on the straight, (not at a corner) No stripping, exhibitors will be asked to walk away and trot back to the judge before commencing their display. Any suitable bridle, including a Micklem bridle, flash or grackle, nosebands etc., and a correctly fitted running martingale can be used. Coloured or plain brow bands can be used. Bit-less bridles and Running Gags are not permitted.

CHAMPIONSHIP - The 1st and 2nd prize winners from classes 522 To 524 to compete

Open to members and pre-registered non-members, 15 yrs and over, eligible under Rising Star Amateur rules.

Please note: Rising Star Amateur Rules 2025 are separate from BSHA Amateur rules. Please see the separate Rising Star Rulebook in the Rising Star section available on the BSHA website. <https://britishshowhorse.org/bsha-rising-stars-series/>

If you are in any doubt regarding your Rising Star Amateur status, please contact the BSHA Office directly, to have your status confirmed.

LIHS 18th – 22nd December 2025

Classes 525-526 qualify for LIHS BSHA Rising Star Supreme Finals at the London International Horse Show, highest placed unqualified in top five to qualify.

A results points table will run for all qualifying classes and a 'wild card' will be awarded to those unqualified with the highest points in each section following the final qualifier.

All three Style & Performance Series classes will be marked, and judged as follows:

Exhibitors will ride together as a class, which will be considered as part of the collective marks.

Exhibitors will then be asked to perform a freestyle show/display (max 2.5 mins), which will be marked, to include, (but not restricted to), in any order:

- on both reins, walk, trot, canter.
- halt in the middle of the show/display for 4 secs before proceeding.
- a canter change of rein across the diagonal through trot or walk (5 strides max).
- lengthened canter strides.
- free walk on a long rein.

Marks:

<i>Performance (not to exceed 2.5 minutes)</i>	70 Marks
Please see above for full requirements	
<i>Collective marks</i>	
Overall Impression (incl. Horsemanship, Harmony, Rider Position)	15 marks
Manners & way of going for type	15 marks
TOTAL	100 marks

Style & Performance series classes dress rules – please refer to dress rules in the Rising Star Rulebook, the same dress rules apply to both the 'Type' classes and Style & Performance classes.

Class 525: BSHA LIHS Rising Star Style & Performance Young Rider

Mare or gelding, 4 years old or over, exceeding 148cm. Open to ALL types, rider to be aged 15- 25 years. This is a flat class to be judged solely on performance, there will be no conformation marks awarded, and exhibits will not be stripped.

The highest placed unqualified horse in the top 5 will qualify for the LIHS BSHA Rising Star Style & Performance Young Rider Supreme Final at the LIHS in December.

QUALIFICATION WILL BE CONFIRMED BY EMAIL ONCE BSHA MEMBERSHIP IS COMPLETED WITHIN 14 DAYS OF QUALIFICATION In addition, the two highest placed unqualified horses will qualify for the Associate Rising Star Style & Performance final at the BSHA National Championships Show in September. Associate Rising Star Qualification Cards will be awarded in the ring.

Class 526: BSHA LIHS Rising Star Style & Performance Over 25

Mare or gelding, 4 years old or over, exceeding 148cm. Open to ALL types, rider to be aged over 25 years. This is a flat class to be judged solely on performance, there will be no conformation marks awarded, and exhibits will not be stripped.

The highest unqualified horse placed in the top 5 will qualify for the LIHS BSHA Rising Star Style & Performance Over 25 Supreme Final at the LIHS in December. QUALIFICATION WILL BE CONFIRMED BY EMAIL ONCE BSHA MEMBERSHIP IS COMPLETED WITHIN 14 DAYS OF QUALIFICATION.

In addition, the two highest placed unqualified horses will qualify for the Associate Rising Star Style & Performance final at the BSHA National Championships Show in September. Associate Rising Star Qualification Cards will be awarded in the ring.

CHAMPIONSHIP - The 1st and 2nd prize winners from classes 525 To 526 to compete

Open Ridden & In-hand classes

Unaffiliated Classes - £18. Prize Money -1st - £12, 2nd £8, 3rd £5

Not Before 1pm

Judge: Mrs C Collier

Class 527: In hand registered Mountain & Moorland

Youngstock, Welsh Sec A & B, Shetlands, Dartmoor, Exmoor, Welsh Sec C & D, New Forest, Connemara, Dales, Highland, Fell Yearling, 2 and 3 year old Colt, Filly or Gelding.

Class 528: In hand registered Mountain & Moorland Open

Welsh Sec A & B, Shetlands, Dartmoor, Exmoor, 4 years and over, Welsh Sec C & D, New Forest, Connemara, Dales, Highland, Fell Stallion, Mare or Gelding, 4 yrs old or over.

Class 529: Open In-hand

Open to juniors & adults (class maybe split if entries allow, rosettes will be awarded separately if not split) Open to Mares or geldings, any age or height.

Championship The Hawthorn Cup will be awarded to the champion, 1st & 2nd prize winners of classes 527 to 529

RESS Rescue Equine Showing Society Ridden & In Hand Classes

Classes - £18. Prize Money -1st - £12, 2nd £8, 3rd £5

Judge: Ms S Stockley-Bridges

DEFINITION OF RESCUE:

1. Any equine that is adopted, fostered, under a guardianship scheme from any National Equine Welfare Council registered Charity (NEWC).
2. Any equine that has been adopted, fostered, under a guardianship scheme from any other equine charity (must be registered with the Charity Commission).
3. Any equine that has been 'independently' rescued by an individual. There must be supporting evidence (photographic, veterinary) that will be included in the 'Rescue History' for the equine, to demonstrate their rescue status

Class 530: Open Lead Rein & First Ridden

Any type or breed, four years of age and over. Riders up to the age of 12yrs, max height of pony 128cm.

Class 531: Open In-hand

Open in Hand: Any age, type, breed. Mares with foal at foot are not permitted. No exhibit under the age of one year may be exhibited on its own.

Championship 1st & 2nd prize winners of classes 530 to 531

Judge: Mrs H Turnock

Class 532: Novice Ridden Hunter

Mare or gelding, 4years old and over, not having won a first prize of £25 or more in any ridden hunter class.

Class 533: The Riding Club Show Horse Class

Mare or gelding of any type, exceeding 148cms, suitable for all riding club activities. To be judged 50% on manners and an individual show and 50% on conformation. Horses will walk, trot and canter on both reins as a class.

Individual shows will be performed which must include lengthened canter/gallop. Horses will not be ridden by the judge and riders will not be asked to dismount.

The Fendale Salver will be awarded to the winner of this class.

Class 534: Open Lead Rein or First Ridden

Open to Mountain & Moorlands or plaited, riders under 10 yrs on the date of the show.

The Williams and Glyns Cup will be presented to the winner of this class

Class 535: Open ridden pony

Open to mares, stallions or geldings, riders any age, must be suitable mounted, up to 148cm.

Class 536: Ridden registered Mountain & Moorland Novice

Not to have won a ridden classes before January 2025, Open to Welsh Sec A & B, Shetlands, Dartmoor, Exmoor, 4 years and over, Welsh Sec C & D, New Forest, Connemara, Dales, Highland, Fell. Stallion, Mare or Gelding, 4 yrs old or over.

Class 537: Ridden registered Mountain & Moorland Open Ridden

Open to Welsh Sec A & B, Shetlands, Dartmoor, Exmoor, 4 years and over, Welsh Sec C & D, New Forest, Connemara, Dales, Highland, Fell. Stallion, Mare or Gelding, 4 yrs old or over.

Class 538: Junior Ridden

aged 18 years & under, open to all, riders must be suitably mounted, open to mares or geldings.

The **Ian Glover Memorial Cup** will be awarded to the winner of this class

CHAMPIONSHIP - The 1st and 2nd prize winners from classes 532 To 538 to compete

The champion will receive **The Mary Froggatt Cup**

Ashbourne Show would like to thank our kind and generous sponsors: -

**Little Rock Equine Vets,
Su Beardmore & Steph Litherland,
Sophie Knight – Equine Dentist.
Thorswood Equine Transport,
Shaws Equestrian & Pool House.**

**We hope you enjoy Ashbourne Show
Save the date for next year
Saturday 15th August 2026**

Trophies

All trophies are perpetual and will remain the property of Ashbourne Shire Horse Society.

- Trophies are only released after the winner's details have been entered into our trophy register and signed by the winner (if under 18 years then by a responsible adult).
- In signing our trophy register you accept responsibility for safe keeping of our trophy whilst it is in your possession. You agree that should this trophy be lost or stolen whilst in your possession you will reimburse Ashbourne Shire Horse Society for its insured value. If the trophy is damaged in any way whilst in your possession it must be returned immediately to our Jewellers for repair at your expense.
- You also agree to return the trophy by the 30th June 2026 to C W Sellors Jewellers' Ashbourne shop in person and in a clean and undamaged condition and you will ensure they have noted the return on the trophy register.
- You also agree that should your contact details change whilst the trophy is in your possession **you will advise our secretary immediately.**

Personal Information Consent - Entrants

In order to provide a professional and effective service to competitors and entrants to Ashbourne Show, we need to keep a record of personal information. This is information such as your name, contact details and age, and possibly those of family members if appropriate. You may also provide us with dietary or other medical information that will allow us to ensure your safety and convenience whilst at Ashbourne Show.

The Ashbourne Shire Horse Society respects your privacy and will only use your data for the provision, communication and processing of your entry and other requirements and for providing you with information regarding future shows and events. Entrants' information will be published within the show catalogue and provided to the relevant breed societies and professional and regulatory bodies as necessary, and prize-winners will be listed on our website and elsewhere. We will not otherwise share your personal data with other third parties without your prior consent unless required to do so by law. All personal information is treated as private and confidential; it is recorded electronically on a database and/or in a paper file. You have the right to see any information that we hold about you, and to have your details removed.

REGULATIONS FOR THE SOCIETY'S SHOW

1. All exhibits must be bona-fide property of the exhibitor and carry the correct number.
2. All exhibitors are reminded that they compete at their own risk and they should have public liability insurance.
3. The judges' decision shall be final, and the Council reserves the right to withhold any prizes if, in the opinion of the judges, the exhibits do not possess sufficient merit
4. **All prize money will be paid out on the day of the show from the secretary's tent on the main showground. Money WILL NOT be paid out without the prize money voucher awarded in the ring. Any uncollected prize money will be forfeited. Please note prize money will not be paid out until 1 hour after a class has ended. Any disputes must be addressed with the Light Horse Secretary and may be resolved after the show Prize money awarded to persons under 16 will only be issued if accompanied by an adult.**
5. The Society reserves the right to alter the schedule at its discretion or to merge classes if there are insufficient exhibitors. Entry fees will be refunded for any event cancelled.
6. Any exhibitor wishing to lodge a protest in respect of any animal exhibited at the show in the Light Horse Section must do so in writing within 60 minutes of completion of the class together with a deposit of £20. This sum shall be forfeited if, on investigation by the Council, the protest is not sustained.
7. The Council will not hold itself responsible for any loss or accident whatsoever which may occur on the showground and all entries shall be deemed to have been made on this understanding.

9. Acknowledgement of entry forms, together with the necessary tickets, will be sent by the Secretary to enable exhibitors to check their entries have been received. If you do not receive this acknowledgement at least 7 days before the show, please contact the Light Horse Secretary. Competitors are requested to take particular note of the times of their classes and to be ready in the collecting ring.

10. The Society reserves the right to have measured any horse or pony where there is a height stipulation and where certificates issued under the Joint Measurement Scheme cannot be produced as evidence of height. Where applicable, competitors may also be requested to produce birth certificates as proof of age.

11. EQUINE PASSPORTS: Exhibitors are required to have passports for all horses/ponies when competing at the show for each of their exhibits. Please ensure you have proof of this as random checks will be made.

11.1 Equine Flu & Tetanus Vaccinations

- Equine Influenza and Tetanus vaccinations are a compulsory requirement for all horses attending the Ashbourne Show.
- The requirement for the first 3 vaccinations is as follows:
- The first 2 vaccinations 21 – 92 days apart,
- a third booster between 150-215 days,
- and an annual booster vaccination within 6 months of the show.
- No horse should enter competitions within 7 days of an EI vaccination.
- Foals should commence vaccinations at 6 months old.
- This rule may be subject to change from guidance from the FEI/BEF and any changes will be notified via the Showing Council and ASAO websites.

12. All foals must be at least 3 weeks old. Stallions and colts 2 yrs old or over must hold a Ministry of Agriculture, Breed Society or NPS Stallion licence, unless otherwise governed by their individual breed society. All handlers of stallions and colts 2 yrs old and over must be 14 yrs old or over.

13. If late entries are accepted, double the entry fee will be charged, in accordance with the terms and conditions shown under the entry rules listed in this schedule.

14. The Society reserves the right to postpone, cancel, abandon, or curtail the Show due to 'force majeure' or otherwise at its absolute discretion. In no circumstances shall the Society be liable, in contract, tort (including negligence or breach of statutory duty) or otherwise howsoever, and whatsoever the cause thereof (i) for any loss of profit, business, contracts, revenues, or anticipated savings, or (ii) for any special indirect or consequential damage or losses of any nature whatsoever. For the purposes of this Condition, '*Force Majeure*' means fire, explosion, flood, lightning, Act of God, act of terrorism, war, rebellion, riot, sabotage, or official strike or similar official labour dispute, or events or circumstances outside the reasonable control of the Society.

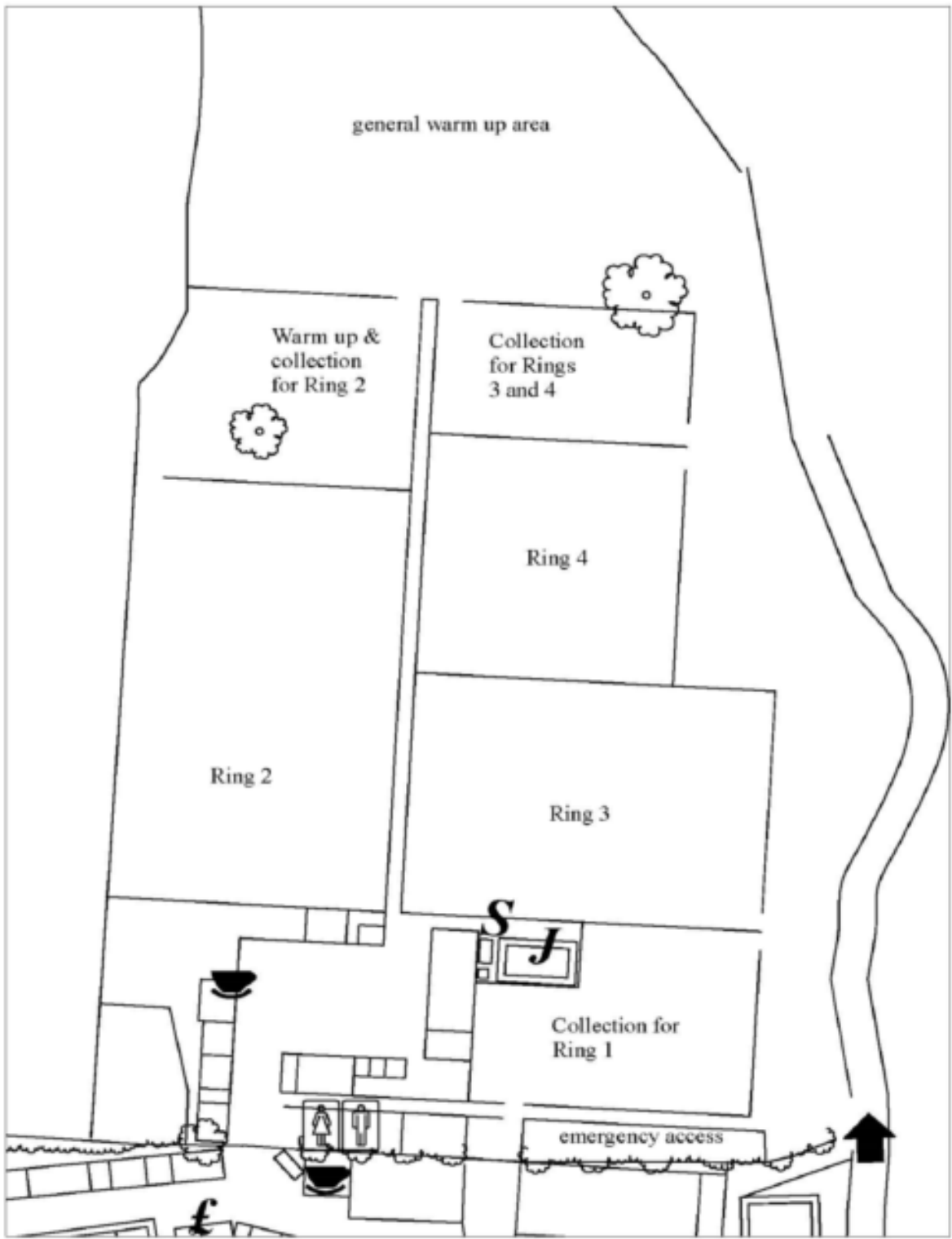
15. Mountain and Moorland in hand ponies must be registered with their respective breed society to be eligible to compete & registration numbers must be stated on the entry form.

17. Native ponies entered in affiliated classes must be registered to their relevant breed society to compete.

18. Hard hats in accordance with breed society rules must be worn at all times when mounted. It is strongly recommended that competitors aged 18 or over wear correctly secured Skull Caps/Riding Hats that meet current Safety Standards. It is mandatory for competitors under the age of 18 to wear such skull caps or hats. In the jumping phase of working hunter classes, the aforementioned skull caps/riding hats must be worn.

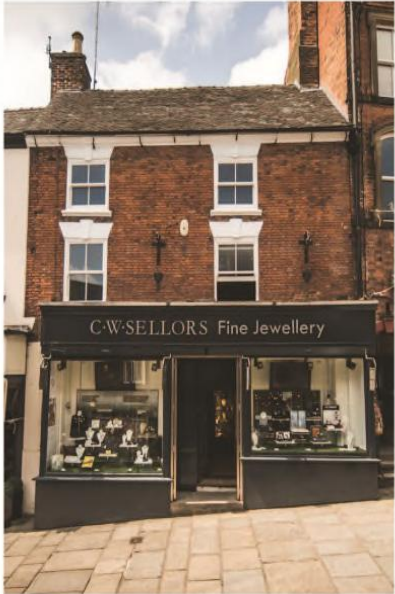
19. Classes held under the rules of the British Show Horse Association. Open to members and pre-registered non-members, 15 yrs and over, eligible under Rising Star Amateur rules. Please note: Rising Star Amateur Rules 2025 are separate from BSHA Amateur rules. Please see the separate Rising Star Rulebook in the Rising Star section available on the BSHA website. <https://britishshowhorse.org/bsha-rising-stars-series/> **If you are in any doubt regarding your Rising Star Amateur status, please contact the BSHA Office directly, to have your status confirmed.**

20. In the Private Driving classes, all horses and ponies to be 4yrs old and over. **Young Driver** – The driver must be aged 8 years or over on the first day of the show at which they are to compete. A driver under the age of 18 must be accompanied in the vehicle by a competent and responsible person aged 18 years or over, a “responsible adult”. Proof of age will be required if necessary. It is the responsibility of the owner/driver (if over 18) or (if the owner/driver is under 18) the responsible adult to ensure that his/her groom/s is/are competent for the purpose of attending to the turnout and aged 8 or over on the day of the show. When in the vehicle grooms, passenger/s and driver must have their feet firmly on the floor of the vehicle or use a suitable fixed footrest. The regulations apply at all times and in all areas of the showground. **Hard Hat Ruling** – All drivers/grooms/passengers under the age of 14 years must wear a correctly fitted hard hat when in a carriage or in attendance to a turnout.
21. BSPS Classes - Please see Rules regarding BSPS Hat Rule & Body protectors.
22. Any competitor or animal on the showground deemed to be rude, dangerous, out of control or being mistreated can be approached and dealt with by any official of the Ashbourne Show.
23. All horses or ponies competing over the age of 15 years old are eligible to be awarded a special rosette for being the highest placed veteran. Please wear a white armband whilst competing to signify this.
24. The Society's Veterinary Officers are authorised to refuse permission for any animal or bird to be admitted to, or to have removed from, the Showground any animals affected with contagious or infectious disease, or any deemed not fit to show. Concealment of disease will render the Exhibitor liable to disqualification.
25. Exhibitors should not bring any diseased or ill animal or bird onto the Show premises, and if under any circumstances this regulation be violated, the exhibitor of the animal or bird will be solely responsible for any claims that may arise for damage or loss to other exhibitors or any other persons, and the Society holds itself free from liability in such cases. Should any animal or bird manifest symptoms of disease or illness during the Show, it must be reported to the Chief Steward of the relevant Section immediately.
26. The Society has an appointed veterinary surgeon and their role is to deal with requests from judges, stewards and other Society officials and to attend to emergencies that may arise. It is a condition of entry that these veterinary surgeons may on their own authority give to any animal such emergency treatment as they may consider appropriate in the event that the owner or their representative cannot immediately be found. Exhibitors will be required to pay any such veterinary surgeon for the full cost of the treatment administered whether in an emergency as above or if such treatment is requested.
27. **The Society reserves the right to reject any entry, for whatever reason.**



S Secretary
J Judges' marquee

C·W·SELLORS
FINE JEWELLERY & LUXURY WATCHES



Timepiece
collections
presented by

C·W·SELLORS  **jura**
LUXURY WATCHES

Proud sponsors of
Ashbourne Show
Victoria Square, Ashbourne
Tel: 01335 342002

Boutiques also at
Matlock · Bakewell · Buxton · Chesterfield

www.cwsellers.co.uk
www.jurawatches.co.uk